

GAS MOTORCOACH

GAS MOTORCOACH



# BAY STAR

## SPORT







## Your Adventure Awaits

The Bay Star Sport is all new for 2022. That means newly redesigned features both inside and out. This makes a coach that's already an affordable package full of Newmar innovations even better. It's built on a next-generation Ford® F-Series Class A Motorhome Chassis, powered by a 7.3-liter V8 engine that packs 350 horsepower and 468 lb./ft. of torque. Get ready for your adventure.







*Teton full-paint Masterpiece Finish™*

## Hit the Road

With all-new styling, the Bay Star Sport offers plenty of good times to anyone who jumps inside. Seven floor plans, including one new for 2022, mean you can find the perfect coach to fit your travel style. Speaking of: heavy duty sway bars help keep the drive smooth, and the engine is partnered with the Ford TorqShift® automatic overdrive transmission, so you can easily tow a get-around vehicle.



## Home on the Road

Take everything you love about home on the road with you. You can keep up with your favorite shows or find new ones on the Samsung® LED TV, and stream with an available Wi-Fi package. You can also sit back and enjoy the new décor of your space, with new furniture designed by Williamsburg. There's also new flooring, a newly designed slideout fascia, and new window treatments.



*Floor plan 3014 with Teton décor  
and Harbour Glazed Maple cabinetry*





## Start Your Engine

Every new adventure begins in the cockpit. Newly restyled captain's chairs await you and offer loads of comfort, and you can upgrade the driver's seat to include power controls for seamless adjustment. Integrated cruise control and dash menu interface switches mean you can keep your hands on the steering wheel at all times. A new dash also puts a charging pad near the driver's seat. This helps you keep your phone charged while plugging it into the optional radio with 10" monitor. The USB input allows the monitor to display navigation and music options from your personal device.





## A Quick Bite

The spacious and well-appointed galley inside the Bay Star Sport provides plenty of space for storage. There are roomy cabinets and a large pantry, all of which have hardwood doors and concealed hinges, which are ideal for kitchen appliances and other cooking necessities. Plus, there are drawers and base cabinets as well. The appliance suite includes a Suburban gas oven and cooktop and a Norcold® fridge to whip up something easily. The room is pulled together with a polished countertop featuring a new countertop edge design, and backsplash for 2022.







## Any Adventure You Dream Of

Get some much-needed relaxation inside the Bay Star Sport master suite, with a queen-size mattress, newly redesigned headboard, and quilted bedspread. All of these features are upgraded to a king in floor plans 3226 and 3316. Across from the foot of the bed is a mounted Samsung® LED TV. For storage, you'll find a wardrobe, large dresser drawers, and nightstands with base cabinets, so any adventure is within your reach.





## Rinse It Away

The master bathroom of the 2022 Bay Star Sport is there to rinse the day away, or get it started on the right note. Depending on your floor plan, there are several spacious newly-styled shower options available, with new sliding glass doors and handshower. A skylight lets in natural light. Storage is everywhere, with overhead cabinets and a linen closet on some floor plans. It's all finished with polished countertops and an undermount sink which is new for this year.







## Time to Go

With new style, including front and rear caps that set it apart, the 2022 Bay Star Sport is ready to take you anywhere in comfort. Basement storage with taller doors, frames, and compartments for 2022 mean added space to bring along your favorite adventure gear. And to make set up and camping easy, it comes with hydraulic leveling jacks, frameless windows, and a 4.0 kW Cummins Onan® generator, which you can upgrade to a 5.5 kW version. You can upgrade the comfort inside as well, with two optional air conditioners. And enjoy the shade under the Carefree Travel'r® power side awning.



# EXTERIORS



## MERCATO EXTERIOR

Awning Color: Black/Gray



## MERCATO INTERIOR

a. Furniture/Fabric b. Carpet c. Counter Top



## STEALTH EXTERIOR

Awning Color: Black/Gray



## TETON EXTERIOR

Awning Color: Black/Gray

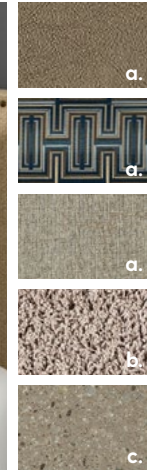


# INTERIOR DÉCOR



## STEALTH INTERIOR

a. Furniture/Fabric b. Carpet c. Counter Top



## TETON INTERIOR

a. Furniture/Fabric b. Carpet c. Counter Top



ARCTIC/GLACIER  
GLAZED MAPLE



HARBOUR/NEWPORT  
GLAZED MAPLE

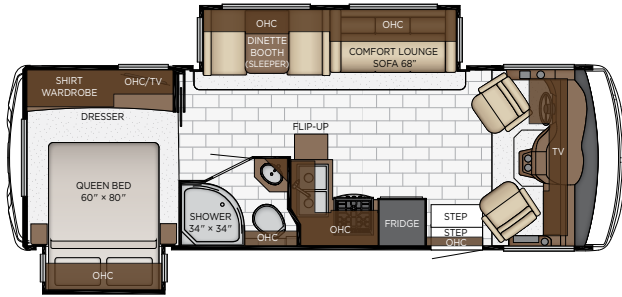


CALYPSO/BERMUDA  
GLAZED MAPLE



# BAY STAR SPORT FLOOR PLANS

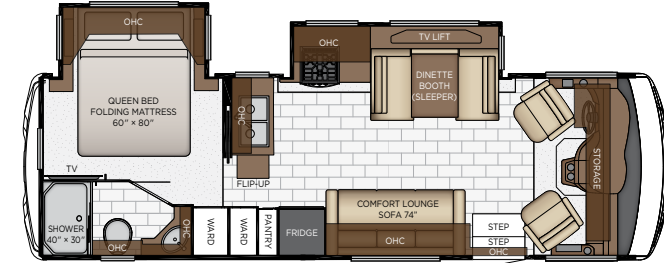
Length: 27' 11"



**2702**

Length	27' 11"	Grey Tank	60 gal.
Width	101.5"	Sewage Tank	40 gal.
App. Overall Height	12' 04"	Water Tank	75 gal.
Interior Width	95.5"	Propane Tank	25 gal.
Interior Height	80"	Furnace	30,000 btu

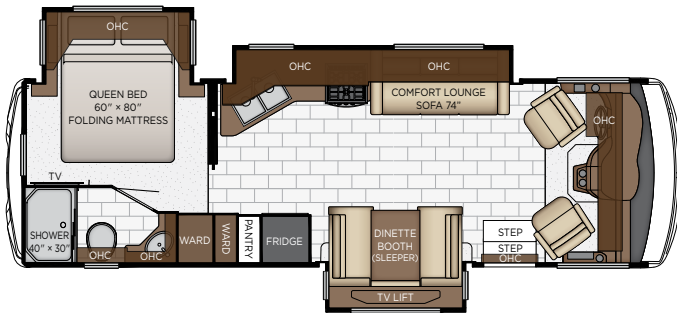
Length: 28' 11"



**2813**

Length	28' 11"	Grey Tank	60 gal.
Width	101.5"	Sewage Tank	40 gal.
App. Overall Height	12' 04"	Water Tank	75 gal.
Interior Width	95.5"	Propane Tank	25 gal.
Interior Height	80"	Furnace	30,000 btu

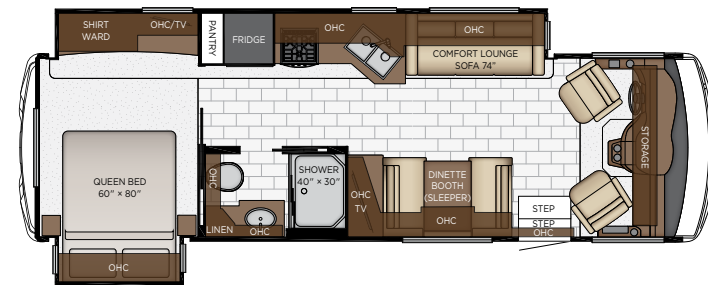
Length: 29' 11"



**2905**

Length	29' 11"	Grey Tank	60 gal.
Width	101.5"	Sewage Tank	40 gal.
App. Overall Height	12' 04"	Water Tank	75 gal.
Interior Width	95.5"	Propane Tank	25 gal.
Interior Height	80"	Furnace	30,000 btu

Length: 30' 11"



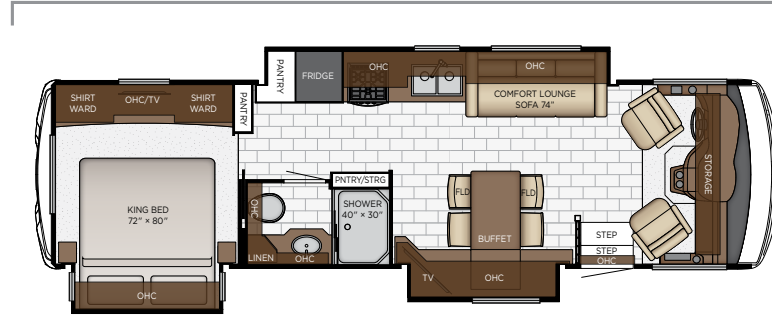
**3014**

Length	30' 11"	Grey Tank	60 gal.
Width	101.5"	Sewage Tank	40 gal.
App. Overall Height	12' 04"	Water Tank	75 gal.
Interior Width	95.5"	Propane Tank	25 gal.
Interior Height	80"	Furnace	35,000 btu



# BAY STAR SPORT FLOOR PLANS

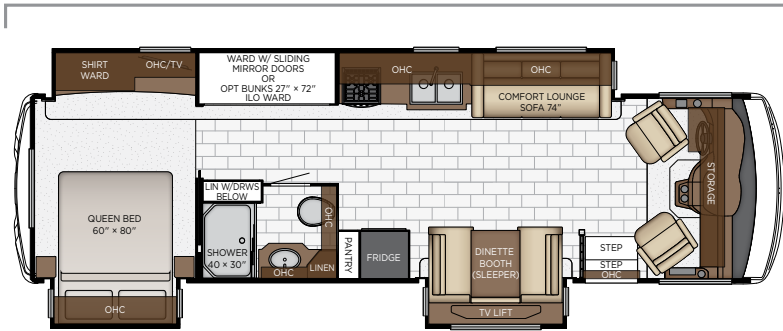
Length: 32' 11"



**3226**

Length	32' 11"	Grey Tank	60 gal.
Width	101.5"	Sewage Tank	40 gal.
App. Overall Height	12' 04"	Water Tank	75 gal.
Interior Width	95.5"	Propane Tank	25 gal.
Interior Height	80"	Furnace	30,000 btu

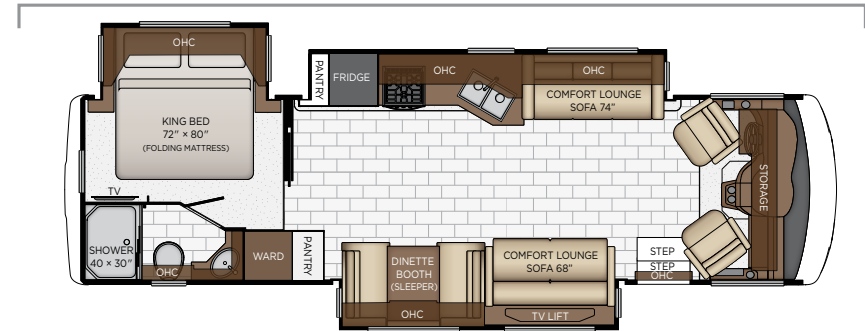
Length: 33' 11"



**3315**

Length	33' 11"	Grey Tank	60 gal.
Width	101.5"	Sewage Tank	40 gal.
App. Overall Height	12' 04"	Water Tank	75 gal.
Interior Width	95.5"	Propane Tank	25 gal.
Interior Height	80"	Furnace	30,000 btu

Length: 33' 11"



**3316**

Length	33' 11"	Grey Tank	60 gal.
Width	101.5"	Sewage Tank	40 gal.
App. Overall Height	12' 04"	Water Tank	75 gal.
Interior Width	95.5"	Propane Tank	25 gal.
Interior Height	80"	Furnace	35,000 btu







## QUALITY YOU CAN FEEL

Like a fine home, the 2022 Bay Star Sport is framed 16 inches on center, and is covered by a BriteTEK™ roof with walkable decking and an integrated gutter rail.

FLOOR PLAN	ENGINE HP	AXLE RATIO	FUEL CAP.	WHEEL BASE	FRONT GAWR	REAR GAWR	TAG GAWR	GVWR	GCWR	APP. UVW	APP. NCC
2702	350	5.86	80 gal.	178	7500 lb.	13500 lb.	n/a	20500 lb.	26000 lb.	15482 lb.	5018 lb.
2813	350	5.86	80 gal.	184	7500 lb.	13500 lb.	n/a	20500 lb.	26000 lb.	16220 lb.	4280 lb.
2905	350	5.86	80 gal.	190	7500 lb.	13500 lb.	n/a	20500 lb.	26000 lb.	17200 lb.	3300 lb.
3014	350	5.86	80 gal.	200	8000 lb.	15000 lb.	n/a	22000 lb.	26000 lb.	18740 lb.	3260 lb.
3226	350	5.86	80 gal.	208	8000 lb.	15000 lb.	n/a	22000 lb.	26000 lb.	18437 lb.	3563 lb.
3315	350	5.86	80 gal.	224	8000 lb.	15000 lb.	n/a	22000 lb.	26000 lb.	18700 lb.	3300 lb.
3316	350	5.86	80 gal.	222	8000 lb.	15000 lb.	n/a	22000 lb.	26000 lb.	18885 lb.	3115 lb.

**The content in our literature depicts and describes products that are subject to change. For the most recent images and information, please visit [NewmarCorp.com](http://NewmarCorp.com).**

Lengths, heights, widths and dry weights are approximate. Weight will vary based on optional equipment added to the above base weight.

**GAWR:** Gross Axle Weight Rating is the maximum permissible weight for an axle.

**GVWR:** Gross Vehicle Weight Rating is the maximum permissible weight for a fully loaded motor coach.

**GCWR:** Gross Combination Weight Rating is the value specified by the manufacturer of the vehicle as the maximum allowable loaded weight of this motor coach and any towed trailer or towed vehicle.

**UVW:** Unloaded Vehicle Weight is the weight of this motor coach as built at the factory with full fuel, engine oil and coolants. Does not include cargo, fresh water, propane gas or dealer-installed accessories.

**NCC:** Net Carrying Capacity is the maximum weight of all occupants, including the driver, personal belongings, food, fresh water, waste water, propane gas, tools, tongue weight of towed vehicle, dealer-installed accessories, etc., that can be carried by the motor coach.

**Specifications supplied by the chassis manufacturer.**

**Bar Star Sport:**

Roof R-Value = 21

Sidewall R-Value = 11

Floor R-Value = 11



# FEATURES AND OPTIONS

## EXTERIOR



### EXTERIOR FEATURES

Full-Paint Masterpiece Finish™ with Clearcoat Finish

Diamond Shield Protection on Front Cap

Automatic Step for Entrance Door

Convex Exterior Mirrors with Defrost and Remote Control

Rear Hitch for Towing Car

Assist Handle at Entrance Door

Mud Flaps

Smart Level Hydraulic Leveling Jacks with Bluetooth Compatible Touch Pad

### OPTIONS

Rear Ladder

Flag Pole Bracket

### CONSTRUCTION FEATURES

BriteTEK™ Roof with Walkable Deck

Gelcoated Fiberglass Exterior Sidewalls, Front and Rear Caps

Aluminum-Frame Sidewalls and Roof Construction, on 16" Center

5/8" Foam Insulation Laminated in Sidewalls and Ceiling

Automatic Mechanical Lock Arms on Slideout Rooms-Scissor Style

### OPTIONS

Egress Door with Ladder System\*



Bay Star Sport Dash





## WINDOWS, AWNINGS, & VENTS

One Piece Tinted Windshield

Frameless Single Pane Tinted Safety-Glass Windows

Power Vent in Kitchen and Bathroom

Skylight Above Shower

Carefree Travell'R Side Awning

Rear Window in Bedroom\*

### OPTIONS

Slideout Covers, One Full, One Short

Slideout Covers, Two Short

Slideout Covers, Three Short

Frameless Double-Pane Tinted Safety Glass Windows

Bunk Windows

## CHASSIS FEATURES

Ford® F-53 Chassis with 7.3Ltr V-8 Engine, 20,500 lb. on 27'-29' Floor Plans

Ford® F-53 Chassis with 7.3Ltr V-8 Engine, 22,000 lb. on 30'-33' Floor Plans

Cruise Control

Tilt Steering Wheel

Anti-Lock Braking System

Electronic Stability Control

## AIR CONDITIONING & HEATING

13.5M Brisk® Central Air Conditioner

Dash Heater and Air Conditioner

Propane Gas Furnace with Ducted Heat

Driver and Passenger Overhead Dash Fans

### OPTIONS

15.0M Penguin™ Heat Pump Air Conditioner

Two 13.5 Penguin™ Heat Pump A/C, 5.5 Onan Generator, 50 Amp Service with Energy Management System

## ELECTRICAL FEATURES

4.0 kW Cummins Onan® Generator with Remote Switch and Automatic Changeover

30 Amp Electrical Service with Flexible Cord and Automatic Transfer Switch

Two 12 Volt House Batteries

Manual Battery Disconnect Switch for House Battery

12 Volt Auxiliary Receptacle on Dashboard

45 Amp Converter

Daytime Running Lights

Emergency Engine Start Switch

LED Interior Lighting

LED Strip Lighting

Manually Operated Hold-To-Run Slideout Switch

Cable TV Connection

USB Outlet at Dash for Driver Use

Drain Lift Pump with 1200 Inverter\*

Lights in Exterior Storage Compartments

Wireless Phone Charger for Driver

### OPTIONS

1200 Watt Inverter Ran to TV's\*

1200 Watt Pure Sine Inverter for Bedbase, Nightstand and Overhead Cabinet Recepts



## PLUMBING & BATH FEATURES

Demand Water System

Sewage Holding-Tank Rinse

Water Heater Bypass System

Dometic® 310 China Bowl Stool

ABS Shower Surround with Shower Door

Systems Monitor Panel

## INTERIOR FEATURES

Vinyl Covered Ceiling Panels

Pleated Window Shades

Decorative Wall Art

Mini Blinds in Kitchen and Bathroom Windows

Vinyl Floor in Kitchen, Living Area and Bathroom

Carpeting on all Slideout floors

Interior Assist Handle at Main Entrance Door

Bedspread with Bedscarf and Accent Pillow

Inlaid Six Panel Design Interior Passenger Doors

Auto Motion Power Shade at Windshield and Manual Shades at Driver and Passenger Side Windows

Dash Panel Color Coordinated ABS

Integrated Window Blind System on Entry Door

### OPTIONS

Main Flooring Extended into Bedroom





**CABINETS & FURNITURE**

Calypso Glazed Maple Mitered Designer Cabinet Doors-Matte Finish
Concealed Hinges on Cabinet Doors
Drawers Underneath Booth Dinette Seats
Drawers with Full Extension Ball Bearing Guides
Polished Solid Surface Countertop in Kitchen with Undermounted Stainless Steel Sink and Covers
Solid Surface Countertops in Bathroom and Bedroom
Deluxe Leather Sofa and Front Seats
Passenger Seat Work Station
Lifts on Bed Top
Smooth-Top Mattress
Mesh Cell Phone Holder at Each Bunk Bed*
Soft-Close Cabinet Drawers
<b>OPTIONS</b>
Harbour Glazed Maple Mitered Designer Cabinets-Matte Finish
Arctic Glazed Maple Mitered Designer Cabinets-Matte Finish
Drop Down Bunk Bed Over Driver/Passenger Seats with Electric Release Latches and Bunk Ladder
Plush Pillow Top Mattress*
Folding Cockpit Table

Buffet Dinette
Combo Buffet Dinette, Two Fixed/Two Folding Chairs
Six Way Power Driver Seat
King Bed*
Euro Booth Dinette with One Table Leaf
Bunk Beds to Replace Wardrobe
Visionary Trifold Sofa 68" with Memory Foam Mattress
Visionary Trifold Sofa 74" with Memory Foam Mattress
Visionary Trifold Sofa 84" with Memory Foam Mattress

**APPLIANCES & ACCESSORIES**

Three-Burner Range with Oven
Range Hood with Light and Fan
Microwave
Norcold® 8 Cf. Refrigerator
Raised Panel Refer Door Insert
6 gal. Gas/Electric Water Heater with Electric Ignition
<b>OPTIONS</b>
Norcold® 10 Cf. Refrigerator with Icemaker
Norcold® 12 Cf. 4-Door Refrigerator with Icemaker
Icemaker Added to Standard Norcold® Refrigerator (Removes Pantry)

**AUDIO, VIDEO & ACCESSORIES**

LED TV in Living Area (TV Sizes Vary Per Floor Plan)
32" LED TV in Bedroom
Dash Radio AM/FM/CD Player with Harman/JBL 180 Watt Sound System
DVD Player with Coax Switcher
Rearview Colored Monitor System with Audio
Side-View Cameras Displayed onto Rear View Monitor Screen
Winegard Digital Crank Up TV Antenna
TV Jack and 110 Volt Recept in Door Side Exterior Storage Compartment
Satellite Dish Prep on Roof
10 Bc Fire Extinguisher, Smoke Detector, Propane and Carbon Monoxide Detector
<b>OPTIONS</b>
Dash Radio with 10" Monitor-No Navigation System
Sirius Radio Capability with Antenna (Does Not Include Monthly Subscription)
WiFi Ranger Denali/Spruce LTE
WiFi Ranger Tenton/Poplar Combo

\*Check with dealership on floor plan availability.

The content in our literature depicts and describes products that are subject to change. For the most recent images and information, please visit [NewmarCorp.com](http://NewmarCorp.com).



# The Newmar Customer Experience

The Newmar difference goes beyond our industry-leading motor coaches to provide you with an unrivaled ownership experience.



## QUALITY FROM THE START

Every Newmar is crafted one at a time by folks who have spent an average of eight years building them. And each coach we assemble must undergo more than 1,000 tests and checks before ever leaving our factory.



## FRIENDS FOR LIFE

Meet fellow owners through the Newmar Kountry Klub, a top social club for RV travelers that hosts rallies and other special events throughout the U.S. and Canada.



## CAREFULLY SELECTED DEALERS

We view our dealership network in terms of quality, not quantity. Each of our dealers acts as a partner in our shared mission to exceed your highest of expectations, for an ownership experience that's second to none from day one.



## SEAMLESS SERVICE

When you join the Newmar family, we pair you with a dedicated service specialist with expert knowledge of your exact coach. Available 24/7, our service specialists guarantee dealer warranty authorizations within four business hours and ship all in-stock parts the same day, free of charge.



## EVERYTHING IN ONE PLACE

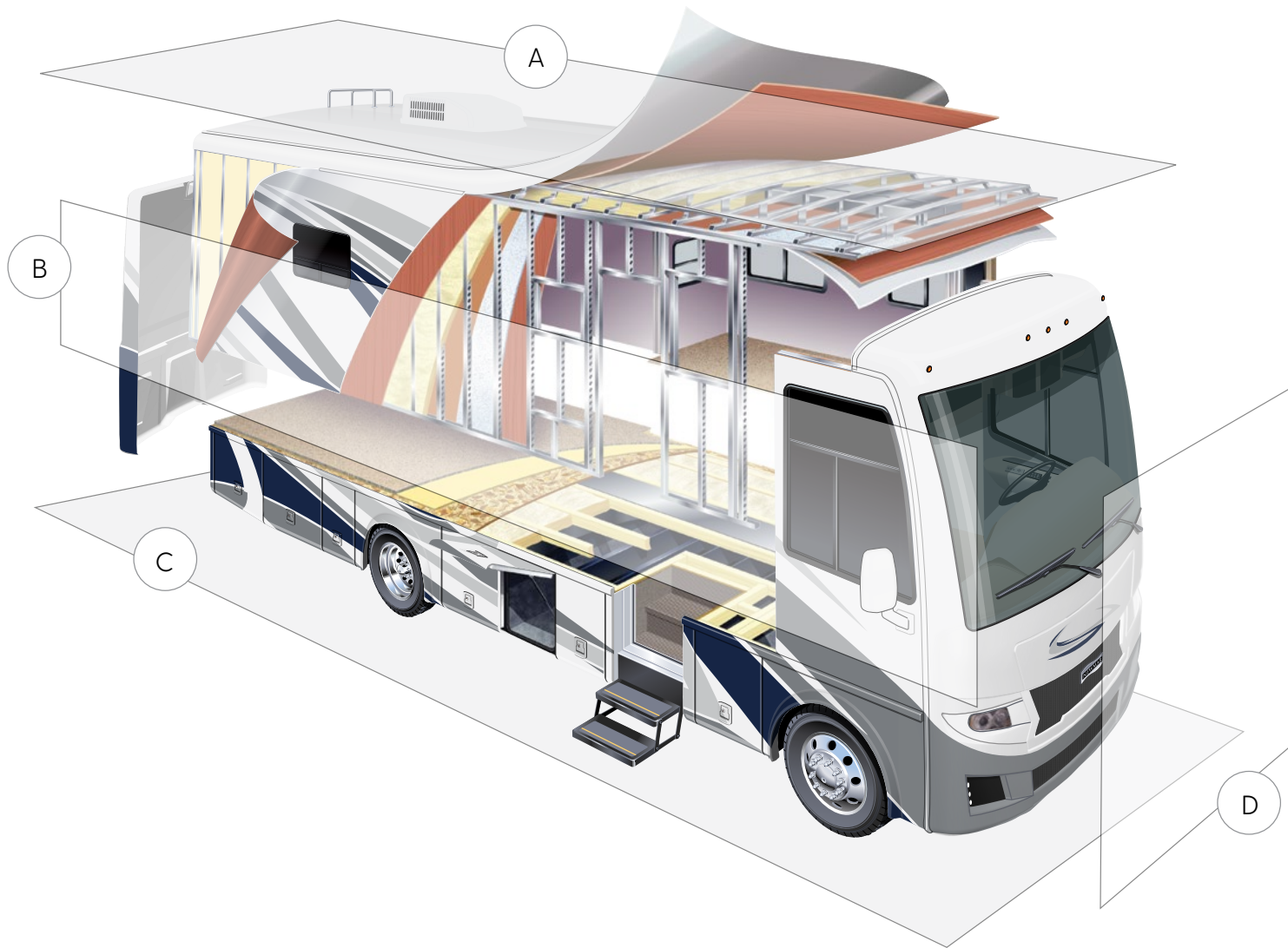
As a Newmar owner, you'll find resources specific to your coach through Newgle, an easy-to-use knowledge base that houses everything from user guides to technical support documents.



## ROCK-SOLID PROTECTION

All models include a one-year/unlimited mileage limited warranty and a five-year, non-transferable structural warranty that covers your coach's superstructure in the event it fails to perform. Ask your Newmar dealer for more details.





## A. ROOF

BriteTEK™ Walkable Roof  
 Batten Insulation  
 A/C Ducting  
 16" on Center Aluminum Rafter Framing  
 Kraft Paper Vapor Barrier  
 5/8" Bead Foam  
 3/16" Panel  
 Padded Vinyl Overlay

## B. SIDEWALL

Interior Wall Panel  
 5/8" Bead Foam  
 Kraft Paper Vapor Barrier  
 Batten Insulation  
 Composite One-Piece Gelcoat Exterior Wall  
 Aluminum Framing

## C. FLOOR

Carpet/Tile  
 Carpet Padding  
 5/8" Floor Decking  
 Batten Insulation  
 16" on Center Wood Framing  
 Polyethylene Moisture Barrier

## D. EXTERIOR

(1) 13.5M Brisk Central Air Conditioner  
 One-Piece Bonded Windshield  
 Frameless, Single-Pane, Tinted Safety Glass Windows  
 Top-Hinged Baggage Doors



# Our Partners

Newmar Quality Begins with the Company We Keep

You deserve class-leading performance from names you can trust. That's why we only work with suppliers dedicated to providing our customers with unrivaled quality, comfort, and support.

## **BASF**

We create chemistry

The Coatings division of BASF is a global expert in the development and production of innovative and sustainable OEM and refinish coatings that deliver solutions beyond your imagination.



## **INDUSTRIAL FINISHES**

Industrial Finishes has supported RV manufacturers for over four decades. The Industrial Finishes paint process delivers uncompromising quality, providing your coach with a true "Masterpiece" finish.



Driven By You

## **FREIGHTLINER CUSTOM CHASSIS**

Freightliner Custom Chassis Corp. (FCCC) is renowned for delivering the industry's best ownership experience through exceptional 24/7 factory-direct support, exceptional ride and handling, and developing high-performance innovations such as DRIVETECH. It's the only RV driving system that prioritizes safety and automotive luxury by putting every command at your fingertips.



## **RIVERPARK**

At RiverPark, we proudly represent the leading brands in consumer electronics—brands you know and trust to provide exceptional quality and innovative technology. Newmar features Samsung's incredible 4K TVs, Xite Infotainment systems featuring Rand McNally Navigation, Bose soundbars, and JBL and Infinity premium audio. Step into a 2022 Newmar and experience dazzling audio and video performance throughout the coach.



## **SPARTAN MOTORS**

Spartan Motors is an American company with over 30 years of experience designing and manufacturing the premier motorhome chassis, which provides superior performance, exceptional safety ratings, and industry-leading technology.





**When You Know the Difference.**

Newmar Corporation | 355 N Delaware St | PO Box 30 | Nappanee, IN 46550-0030 | 574-773-7791 | Fax 574-773-2895

[NewmarCorp.com](http://NewmarCorp.com)