

CLASS-A

# ALLEGRO BUS



TIFFIN



## What's New Summary - Allegro Bus

### WHAT'S NEW

---

- Three New Fabric Suites (Waypoint, Lagos, & Fox Hollow)
- Two New Ultraleather Colors (Tatami Mat & Rice Paper)
- Two New Tile Options (Catalina Ice & Catalina Maple)
- Generation 12 Paint Schemes
- Two 50th Anniversary Exterior Paint Color Packages
- 50th Anniversary Decal
- New Wi-Fi Booster
- Cellular Signal Booster Now Available
- Increased Storage Area Under Safe
- Updated Radiator Grill
- Updated Outdoor Kitchen Counter Top
- Tile in Slide-outs Standard on 45 FP and 45 OPP
- Updated Security System
- Two Load Centers Now Standard Across All Models
- Updated Furniture Styling
- 18,000-pound GAWR, Front - Tag Axles Only
- Updated Pantry
- Updated Dinette Computer Workstation Option
- Black Faucets and Hardware Accessories
- Updated Galley
- New 14.5' Lippert™ On-The-Go™ Ladder
- Chrome Dryer Vents

### NO LONGER AVAILABLE

---

- 37 AP & 40 AP Floorplans
- Tempest III, Chanel II, & Latte III Fabric Suites
- Contemporary Ceiling Treatment
- Silkworm & Gray Owl Ultraleather Colors
- Vicinity White and Tuscany Sea Salt Tile
- Generation 10 Paint Schemes
- L-Shapes Sofa Furniture Options
- Luster Sheen Cabinetry Finish
- Mobileye® Collision Avoidance System

**Premium Paint System**

Our eight-step full-body paint system features premium grade paints sealed with four layers of clear coat with



ultraviolet protection. An additional layer of high-performance film protects the front of the coach and select areas.



Our Generation 11, Generation

12, and the Limited Edition 50th Anniversary premium paint schemes now give you 14 different ways to make your 2023 Allegro Bus your very own. To learn more, visit [tiffinmotorhomes.com](http://tiffinmotorhomes.com).

Images shown are representations of paint layouts only and do not reflect all exterior features or options. Colors shown may slightly differ from colors on actual product.



50TH ANNIVERSARY

**NEW**



LIGHT



DARK

**GENERATION 11**



G11 CINDERWOOD



G11 FIRE OPAL



G11 FROSTED GRANITE



G11 SUNLIT SAND

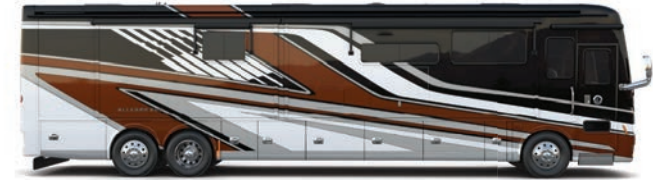


G11 WATERFALL



G11 WHITE MAHOGANY

**GENERATION 12**



G12 CINDERWOOD

**NEW**



G12 FIRE OPAL

**NEW**



G12 FROSTED GRANITE

**NEW**



G12 SUNLIT SAND

**NEW**



G12 WATERFALL

**NEW**



G12 WHITE MAHOGANY

**NEW**

## Floor Plans



The design of every Allegro Bus floor plan must meet four essential criteria: Maximum space, Optimal organization, Relaxation plus, and Elegant atmosphere. Tiffin's MORE Plans offer your family the most comfortable layout for life on the road.



If optional furniture combinations are selected, window locations may vary from diagram shown.

All options may not be available in every model. Because of progressive improvements and specifications, standard and optional equipment are subject to change without notice or obligation.

For a complete and up-to-date list of available options and specifications, visit [tiffinmotorhomes.com](http://tiffinmotorhomes.com).

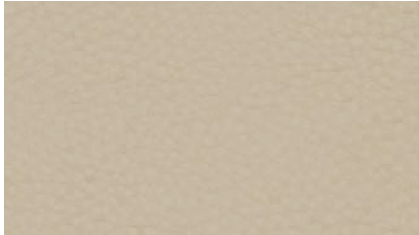
## Interior Décor

Make your experience on the road all your own. Express yourself by choosing the interior appointments such as cabinet finishes, flooring, and décor ensembles for every part of your motorhome. In the 2023 Allegro Bus, you'll be able to travel in style no matter where you go.

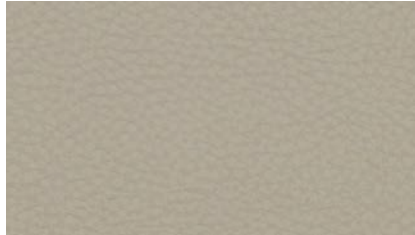


With high-performance functionality and ultimate comfort intertwined, Ultrafabrics® helps to create uniquely sensorial and colorful surroundings.

### FURNITURE



TATAMI MAT



RICE PAPER



Gold Heat® heated tile floors are available on all floor plans. Nothing delivers warmth and comfort in a coach like electric radiant floors.

### FLOORING



CATALINA ICE

GLOSSY FINISH TILE



CATALINA MAPLE

GLOSSY FINISH TILE

Because of progressive improvements and specifications, standard and optional equipment are subject to change without notice or obligation. For a complete and up-to-date list of available options and specifications, visit [tiffinmotorhomes.com](http://tiffinmotorhomes.com).

Colors of interior decor options shown may vary from colors on actual product.

### CABINETS



GLAZED HONEY NATURAL CHERRY



SHADOW



GLAZED CHERRY



GLAZED CANYON CHERRY



PURE LINEN

### ART DECO II



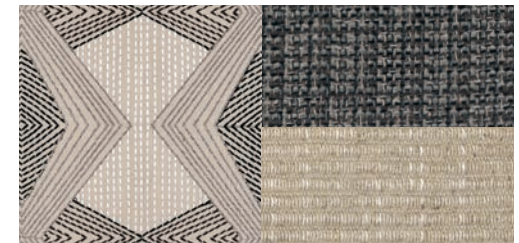
WINDOW TREATMENT



BACKSPLASH



COUNTERTOP



LIVING ROOM



MASTER SUITE

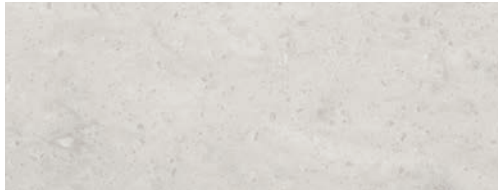
FOX HOLLOW NEW



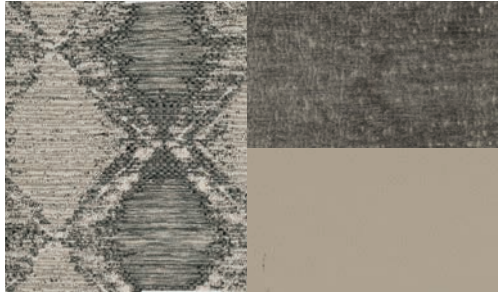
WINDOW TREATMENT



BACKSPLASH



COUNTERTOP



LIVING ROOM



MASTER SUITE

LAGOS NEW



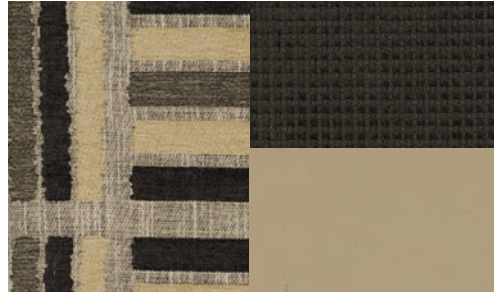
WINDOW TREATMENT



BACKSPLASH



COUNTERTOP



LIVING ROOM



MASTER SUITE

WAYPOINT NEW



WINDOW TREATMENT



BACKSPLASH



COUNTERTOP



LIVING ROOM



MASTER SUITE

# Specifications, Features, and Options

KEY : S : Standard Feature | O : Optional Feature; Additional costs may apply | D : Dependent; Availability is dependent on selection of another option | — : Not Available

WEIGHTS AND MEASURES	35 CP	40 IP	45 OPP		45 FP	
	450 HP (S)	450 HP (S)	450 HP (S)	605 HP (O)	450 HP (S)	605 HP (O)
<b>DIMENSIONS</b>						
Overall Length (approx.) <sup>1</sup>	37' 5"	41'	45'	45'	45'	45'
Overall Width <sup>1</sup>	101"	101"	101"	101"	101"	101"
Overall Height	13' 3"	13' 3"	13' 3"	13' 3"	13' 3"	13' 3"
Minimum Garage Height	14'	14'	14'	14'	14'	14'
Interior Height	83"	83"	83"	83"	83"	83"
Interior Width	96"	96"	96"	96"	96"	96"
Square Footage (approx.) <sup>2</sup>	360	405	440	440	440	440
Basement Storage (cubic feet, approx.)	180	229	257	237	257	237
Wheel Base <sup>3</sup>	232"	276"	323"	316"	323"	316"
<b>WEIGHT LIMITS</b>						
GAWR-Front (pounds)	17,000	17,000	18,000	18,000	18,000	18,000
GAWR-Tag Axle (pounds)	—	—	11,000	13,000	11,000	13,000
GAWR-Rear (pounds)	24,000	24,000	23,000	21,000	23,000	21,000
GVWR (pounds)	41,000	41,000	52,000	52,000	52,000	52,000
Maximum Trailer Weight (pounds) <sup>4</sup>	10,000	10,000	15,000	20,000	15,000	20,000
Hitch Rating (pounds)	10,000	10,000	15,000	20,000	15,000	20,000
GCWR (pounds)	51,000	51,000	67,000	72,000	67,000	72,000
<b>CAPACITIES</b>						
Fuel Tank (gallons)	150	150	150	150	150	150
DEF Tank (gallons) <sup>5</sup>	10	10	10	15	10	15
Fresh Water (gallons)	100	100	100	100	100	100
Grey Water (gallons)	100	100	100	100	100	100
Black Water (gallons)	55	55	55	55	55	55

<sup>1</sup> The approximated coach width and length does not include side-view mirrors and rear ladders.

<sup>2</sup> Square footage was calculated with the slide-outs fully extended.

<sup>3</sup> On tag axle coaches, measurement is taken from the center of the steer axle to the centerline between the drive and tag axle.

<sup>4</sup> Maximum trailer weight is dependent on the loading and towing variables which include the GVWR, GAWR, and GCWR, as well as adequate trailer brakes.

<sup>5</sup> Diesel Exhaust Fluid (DEF) is the active component used in Selective Catalytic Reduction (SCR) engines to reduce nitrogen oxide emissions by 90% to meet EPA standards.

## PLUMBING

- Aqua-Hot® 450D Heat Exchanger <sup>1</sup>
- Aqua View Showermiser™
- Water Filter
- Water Pump Switch Access from Spyder System and Sewer Bay Board
- Low-point Water Drain Lines
- Black Holding Tank Flush System
- Gravity Water Fill
- Heated Water and Holding Tank Compartment
- SeeLevel™ Tank Monitor
- Centralized Exterior Sewer Bay with Gravity Black and Grey Evacuation Ports
- Exterior Rinse Hose with Shower Head
- Sewer Bay Hand Sanitizer and Paper Towel Holders
- Fresh Water Hose with Power Retract Reel
- Sewer Hose Storage

<sup>1</sup> Aqua-Hot® heat exchanger provides both heated air and water.

## CHASSIS AND DRIVETRAIN

- PowerGlide® Rear Engine Diesel Chassis
- Two-wheel Drive
- Aluminum Wheels
- Front and Rear 315/80R 22.5 Tires
- Combination Valid™ Air Leveling System with Hydraulic Leveling Jacks
- ZF Independent Front Suspension
- Reyco® Granning® Air Ride Rear Suspension
- Custom Tuned Koni Shock Absorbers
- Side-mounted Radiator
- Full Air Brake System with Automatic Slack Adjusters
- Three-stage Compression Brake <sup>1</sup> **NEW**
- Manual Parking Brake
- Air Force One Tow Vehicle
- Brake System
- Dual Fuel Fill Capable
- Tire Pressure Monitoring
- Adaptive Cruise Control
- Automatic Traction Control
- Collision Mitigation with Forward Warning and Active Braking
- Electronic Stability Control

CHASSIS OPTIONS		35 CP	40 IP	45 OPP	45 FP
Engine	Cummins L9 450 HP/1,250 lb-ft Torque <sup>2</sup>	S	S	S	S
	Cummins X15 605 HP/1,950 lb-ft Torque <sup>3</sup>	—	—	O	O
Alternator	210-Amp Alternator <sup>4</sup>	S	S	D	D
	280-Amp Alternator <sup>5</sup>	—	—	D	D
Transmission	Allison® 3000 MH 6-speed Automatic Transmission with Lock-up Torque Converter <sup>4</sup>	S	S	D	D
	Allison® 4000 MH 6-speed Automatic Transmission with Lock-up Torque Converter <sup>5</sup>	—	—	D	D
Chassis Batteries	(2) 12-Volt Flooded Lead-Acid	S	S	D	D
	(3) 12-Volt Flooded Lead-Acid	—	—	D	D
Steerable Tag Axle		—	—	S	S
Service Brakes	Front Disc Brakes and Rear Drum Brakes <sup>4</sup>	S	S	D	D
	Front and Rear Disc Brakes <sup>5</sup>	—	—	D	D
	Tag Axle Drum Brakes <sup>4</sup>	—	—	D	D
	Tag Axle Disc Brakes <sup>5</sup>	—	—	D	D

<sup>1</sup> Two-stage compression brake is no longer available.

<sup>2</sup> Peak horsepower achieved at 2,100 RPM. Peak torque achieved at 1,400 RPM.

<sup>3</sup> Peak horsepower achieved at 1,800 RPM. Peak torque achieved at 1,150 RPM.

<sup>4</sup> Standard with 450 HP engine option. Not available with 605 HP engine option.

<sup>5</sup> Standard with 605 HP engine option. Not available with 450 HP engine option.

## ELECTRICAL

- All-Electric Coach <sup>1</sup>
- Spyder Multiplex System Featuring App Compatibility
- 10.0-Kilowatt Onan® Quiet Diesel Generator
- Generator Slide Tray
- 2,800-Watt Pure Sine Wave Inverter with Auto-Gen Start and Interior Remote Control <sup>2</sup>
- (3) 15,000-BTU Low Profile Air Conditioners with Heat Pumps and Condensation Drains
- Extraordinaire™ Air Conditioning System
- Aqua-Hot® 450D Heat Exchanger <sup>3</sup>
- 50-Amp Shore Power with Powered Retract Reel
- In-motion Satellite Dish <sup>4</sup>
- Rewiring for Winegard® Travler™ Satellite
- Prep for Solar Panels <sup>5</sup>
- Auxiliary Solar Port
- Energy Management System
- Blu-ray™ Player
- Satellite Receiver
- Park Cable and Ground Satellite Hook-up
- HD Over-the-air Antenna <sup>6</sup>
- Prep for Winegard® Connect™
- 12-Volt Breaker Panel
- 12-Volt Disconnect Switch
- Rotary Disconnect Switches for House Batteries, Chassis Batteries, and Inverter
- Ground Fault Circuit Interrupter (GFCI) Outlets at Galley, Lavatories, and Sewer Bay
- 110-Volt Exterior Receptacle
- Surge Guard® Transfer Switch
- USB Receptacles Throughout Coach

ELECTRICAL OPTIONS		35 CP	40 IP	45 OPP	45 FP
House Batteries	(6) 6-Volt Flooded Lead-Acid Batteries	S	S	S	S
	(6) 6-Volt Extended Cycle AGM Batteries	O	O	O	O
	(3) 12-Volt Lithium Batteries	O	O	O	O
Battery Slide-out Tray <sup>7</sup>		D	D	D	D
Solar Panels	(3) 200-Watt Solar Panels with (1) 30-Amp Controller	O	O	O	O
	(6) 200-Watt Solar Panels with (2) 30-Amp Controllers	—	O	O	O
Cellular Signal Booster <b>NEW</b>		O	O	O	O
Wi-Fi Booster <b>UPDATED</b>		O	O	O	O

<sup>1</sup> Space heating, water heating, and cooking appliances are electrically powered. All-electric coaches still require diesel for the engine and either shore power or a generator to operate air conditioning.

<sup>2</sup> Automatic generator start capabilities controlled through Spyder Controls Multiplex System.

<sup>3</sup> Aqua-Hot® heat exchanger provides both heated air and water.

<sup>4</sup> High-definition programming is not available on a domed satellite antenna unless you subscribe to DISH Network®.

<sup>5</sup> Includes docking ports for aftermarket solar panels.

<sup>6</sup> Requires subscription.

<sup>7</sup> Standard with flooded and extended cycle AGM batteries. Not available with lithium batteries.



## Specifications, Features, and Options (Cont'd)

KEY : S : Standard Feature | O : Optional Feature; Additional costs may apply | D : Dependent; Availability is dependent on selection of another option | — : Not Available

### INTERIOR

- Handcrafted Cabinet Fascias and Doors with Concealed Hinges
- (2) Flat-panel Televisions <sup>1</sup>
- Solid Surface Galley Countertop
- Soft Touch Vinyl Ceiling
- LED Lighting
- Prep for Washer and Dryer
- Carbon Monoxide Detector
- LPG Leak Detector
- Smoke Detector
- Fire Extinguisher
- Powered Solar and Privacy Shades
- Soft-closing Drawer Slides
- Powered Roof Vents
- Central Vacuum System with VacPan® Automatic Dustpan
- Interior Grab Handle at Entry Door

INTERIOR OPTIONS		35 CP	40 IP	45 OPP	45 FP
Fabric Suites <sup>2</sup>	Waypoint <b>NEW</b>	O	O	O	O
	Lagos <b>NEW</b>	O	O	O	O
	Fox Hollow <b>NEW</b>	O	O	O	O
	Art Deco II	O	O	O	O
Ultraleathers <sup>3</sup>	Tatami Mat <b>NEW</b>	O	O	O	O
	Rice Paper <b>NEW</b>	O	O	O	O
Cabinetry Stain	Glazed Canyon Cherry	O	O	O	O
	Glazed Cherry	O	O	O	O
	Glazed Honey Natural Cherry	O	O	O	O
	Pure Linen	O	O	O	O
Floor Tiles	Shadow	O	O	O	O
	Catalina Maple Glazed Porcelain Tile	O	O	O	O
	Catalina Ice Glazed Porcelain Tile	O	O	O	O
Slide-out Flooring	Treated Carpet in Slide-out Floors	S	S	—	—
	Tile Slide-out Floors <b>NEW</b>	—	—	S	S
Slide-out Fascia	Handcrafted Traditional Slide-out Fascia	S	S	S	S
	Handcrafted Contemporary Slide-out Fascia	O	O	O	O
Washer & Dryer	Prep for Washer and Dryer	S	S	S	S
	Stacked Washer and Dryer	O	O	O	O
Emergency Exits	Bathroom Egress Door	—	—	—	S
	Bedroom Egress Door <sup>4</sup>	D	D	D	—
Gold Heat® Dual Zones Heated Tile Floor	O	O	O	O	

<sup>1</sup> Located in living area and bedroom.

<sup>2</sup> Latte III, Chanel II and Tempest III are no longer available.

<sup>3</sup> Silkworm and Grey Owl are no longer available.

<sup>4</sup> Available as an add-on option when combined with overhead cabinet with headboard. Not available with window at head of bed.

### EXTERIOR

- Full-body Paint with (4) Layers of Clear Coat
- High Performance Protective Film on Front Cap and Select Areas
- Girard® Powered Door Awning with Integrated LED Lighting
- Girard® Slide-out Toppers
- Side-swinging Exterior Storage Doors with Gas Shocks
- Lockable Handles on Compartment Doors
- Motion-sensor Lights in Cargo Bay
- 120-Volt and 12-Volt Outlets Inside Cargo Bays
- Charcoal Carpet Cargo Walls
- Pass-through Basement Storage
- Flush, Dual-Pane Windows
- Exterior Patio Light
- Fog Lights
- Daytime Running Lights
- Docking Lights
- Exterior Ground Effects Lighting
- Chrome Power Heated Side-View Mirrors with Integrated Cameras
- Exterior TV with Soundbar
- Fast Charge USB ports within Exterior TV Compartment
- Manual Exterior TV Compartment Door
- Deadbolt Front Entrance Lock
- Lighted Entry Door Grab Handle
- Automatic Stainless Steel Double Entry Step
- Keyless Entry System for Front Entrance and Component Doors
- Exterior Spyder System Control Panel
- Mud Flaps
- Custom Rock Guard
- Concealed Air Horn
- Striped Slide-out Endwalls
- Limited Edition 50th Anniversary Decal **NEW**

EXTERIOR OPTIONS		35 CP	40 IP	45 OPP	45 FP
Patio Awnings	(1) Girard® Roof-mounted Powered Patio Awning with Integrated LED Lighting and Dual Pitch Feature	S	S	S	S
	(2) Girard® Roof-mounted Powered Patio Awnings with Integrated LED Lighting and Dual Pitch Feature	O	O	O	O
Window Awnings	Girard® Manual Window Awning Package	S	S	S	S
	Girard® Powered Window Awning Package	O	O	O	O
Cargo Door Stainless Steel Rocker Trim	O	O	O	O	
Slide Trays <sup>1</sup>	(1) Manual Storage Compartment Slide-out Tray	O	O	O	O
	(2) Manual Storage Compartment Slide-out Trays	—	O	O	O
Pull-out Outdoor Electric Grill <sup>2</sup>	—	D	—	—	
Outdoor Kitchen with Electric Grill, Sink, and Single-burner Induction Cooktop <sup>3</sup>	—	—	O	O	
Basement Freezer	O	O	O	O	
Exterior Lighting under Slide-out	O	O	O	O	
Lippert™ On-The-Go™ Telescoping Ladder <sup>4</sup> <b>NEW</b>	O	O	O	O	

<sup>1</sup> Trays slide out on both sides of motorhome. Not compatible with outdoor kitchen option.

<sup>2</sup> Option requires at least (1) storage compartment slide-out tray.

<sup>3</sup> Option includes an electric slide tray. Not compatible with manual slide trays.

<sup>4</sup> All units will ship with a Lippert™ On-The-Go™ Prepped Receiver installed.

## Specifications, Features, and Options (Cont'd)

KEY : S : Standard Feature | O : Optional Feature; Additional costs may apply | D : Dependent; Availability is dependent on selection of another option | - : Not Available

### DRIVER'S COMPARTMENT

<ul style="list-style-type: none"> <li>• Ultraleather Power Driver and Passenger Seats</li> <li>• Powered Passenger Seat Footrest</li> <li>• Integrated Seat Belts on Driver and Passenger Seats</li> <li>• Lumbar Support on Driver and Passenger Seats</li> <li>• Tilt and Telescoping Steering Wheel with Integrated Controls</li> <li>• Adjustable Accelerator and Brake Pedals</li> <li>• Dual Dash Fans</li> <li>• USB Dash Receptacles</li> <li>• Storage Drawer in Dash</li> <li>• 12-Volt Dash Receptacle</li> <li>• Backlit Dash Switches</li> <li>• Contemporary Dash</li> <li>• Valid™ LCD Instrument Cluster Display</li> </ul>	<ul style="list-style-type: none"> <li>with Integrated Leveling Controls</li> <li>• Cupholders on Driver and Passenger Side</li> <li>• Passenger Side Spyder System Control Panel</li> <li>• Built-in Driver and Passenger Consoles</li> <li>• Passenger Side Phone Charging Station</li> <li>• Driver and Passenger Map Lights</li> <li>• One-piece Panoramic Windshield</li> <li>• Single-motor Intermittent Windshield Wipers</li> <li>• Automatic LED Headlights</li> <li>• Blind Spot Monitoring System</li> <li>• Ceiling Mounted Speakers</li> <li>• Stereo with AM &amp; FM Radio, CD Player, and Satellite Radio <sup>1</sup></li> <li>• Side-view Cameras <sup>2</sup></li> </ul>	<ul style="list-style-type: none"> <li>• Color Back-up Camera with Monitor</li> <li>• In-dash Navigation System</li> <li>• Driver's Compartment Overhead Cabinets with Wooden Panel Doors</li> <li>• Auxiliary Start Switch</li> <li>• Powered Opening Driver Side Window</li> <li>• Solid, Non-opening Passenger Side Window</li> <li>• Powered Solar and Privacy Windshield Shade</li> <li>• Powered Solar and Privacy Shades on Side Windows</li> <li>• Solid Surface Step Well with Tile Inserts</li> <li>• Powered Step Well Cover</li> <li>• Storage Compartment Within Entry Steps</li> <li>• Recessed Lighting Within Step Well</li> </ul>
----------------------------------------------------------------------------------------------------------------------------------------------------------------------------------------------------------------------------------------------------------------------------------------------------------------------------------------------------------------------------------------------------------------------------------------------------------------------------------------------------------------------------------------------------------------------------------------------------------------------------------------------	---------------------------------------------------------------------------------------------------------------------------------------------------------------------------------------------------------------------------------------------------------------------------------------------------------------------------------------------------------------------------------------------------------------------------------------------------------------------------------------------------------------------------------------------------------------------------------------------------------------------------------------------------------------------------------------------	----------------------------------------------------------------------------------------------------------------------------------------------------------------------------------------------------------------------------------------------------------------------------------------------------------------------------------------------------------------------------------------------------------------------------------------------------------------------------------------------------------------------------------------------------------------------------------------------------------------------------------------------------

DRIVER'S COMPARTMENT OPTIONS	35 CP	40 IP	45 OPP	45 FP
360° View Camera <sup>3</sup>	O	O	O	O
Advanced Monitor System <sup>4</sup>	O	O	O	O
JBL® Sound System	O	O	O	O
Front Overhead TV	O	O	O	O

<sup>1</sup> Subscription required for satellite radio.

<sup>2</sup> Integrated within side-view mirrors and activated by turn signals.

<sup>3</sup> Requires JBL® Sound System and Advanced Monitor System options.

<sup>4</sup> Includes (2) 10" monitors, (1) 7" passenger monitor, media center, AM & FM Radio, Satellite Radio (subscription required), and RV GPS. Requires JBL® Sound System.

DINETTE AND LIVING AREA		35 CP	40 IP	45 OPP	45 FP
Driver Side Furniture	Ultraleather Air Coil Sofa <sup>1</sup>	S	S	S	-
	Theater Seating	O	O	O	-
	(2) Ultraleather Recliners	-	O	O	-
	Ultraleather Air Coil Sofa with Lift TV <sup>1</sup>	-	-	-	S
	Ultraleather DE Sofa with Lift TV <sup>2</sup>	-	-	-	O
Passenger Side Dinette	Ottoman with Internal Storage <sup>3</sup>	D	D	D	D
	Dinette Computer Workstation with TV Lift <sup>4</sup> <b>UPDATED</b>	S	-	-	-
	Dinette Bar with Lift TV	O	-	-	-
	Dinette Computer Workstation <sup>4</sup> <b>UPDATED</b>	-	S	S	S
	Ultraleather U-shaped Dinette	-	O	O	O
Passenger Side Furniture	Dinette Bar	-	-	-	O
	Overhead Dinette Cabinets	-	S	S	S
	Ultraleather DE Sofa Bed with Lift TV <sup>2</sup>	-	S	S	-
	Ultraleather Air Coil Sofa Bed with Lift TV <sup>1</sup>	-	O	O	-
	Ultraleather Recliner and Lift TV with Fireplace	-	O	O	-
	Ultraleather Recliner and Lift TV	-	O	-	-
	Ultraleather DE Sofa Bed <sup>2</sup>	-	-	-	S
	(2) Ultraleather Recliners	-	-	-	O
	Theater Seating	-	-	-	O
Ultraleather Air Coil Sofa Bed <sup>1</sup>	-	-	-	O	
Fireplace <sup>5</sup>	O	-	-	-	

<sup>1</sup> Piece of furniture sleeps two comfortably.

<sup>2</sup> Piece of furniture sleeps one comfortably.

<sup>3</sup> Standard unless theater seating option is chosen.

<sup>4</sup> The printer bump-out was removed for more leg room. The keyboard and printer trays have been converted to a drawer and a fixed shelf to maximize storage.

<sup>5</sup> Not compatible with beverage center on 35 CP.

### KITCHEN

<ul style="list-style-type: none"> <li>• Stainless Steel Convection Microwave with Exterior Venting</li> <li>• Double Bowl Kitchen Sink with Single Lever Faucet and Pull-down Sprayer</li> <li>• Built-in Soap Dispenser</li> </ul>	<ul style="list-style-type: none"> <li>• Galley Overhead with Pull-out Drawers</li> <li>• Panoramic Galley Window</li> <li>• LED Countertop Lighting</li> <li>• Full Tile Backsplash</li> </ul>	<ul style="list-style-type: none"> <li>• Solid Surface Galley Countertop, Sink, and Cooktop Cover</li> <li>• Pull-out Utility Box Located Under Sink</li> </ul>
--------------------------------------------------------------------------------------------------------------------------------------------------------------------------------------------------------------------------------------	-------------------------------------------------------------------------------------------------------------------------------------------------------------------------------------------------	-----------------------------------------------------------------------------------------------------------------------------------------------------------------

KITCHEN OPTIONS		35 CP	40 IP	45 OPP	45 FP
Cooking Appliances	22-Cubic Foot Stainless Steel Residential Refrigerator with French Doors and Bottom Freezer <sup>1</sup>	S	-	-	S
	25-Cubic Foot Stainless Steel Residential Refrigerator with French Doors and Bottom Freezer <sup>1</sup>	-	S	S	-
Decorative Wooden Refrigerator Panel		O	O	O	O
Cooking Appliances	Two-Burner Induction Cooktop	S	S	S	S
	Wolf® Induction Cooktop	O	O	O	O
InSinkErator® Instant Hot Water Faucet	O	O	O	O	
Drawer-style Dishwasher	O	O	O	O	
12" Beverage Center <sup>2</sup>	O	-	O	O	
Expand-An-Island	-	S	S	S	

<sup>1</sup> Refrigerator volume is approximated.

<sup>2</sup> Not compatible with fireplace on 35 CP.

### BATHROOM

<ul style="list-style-type: none"> <li>• (2) Porcelain Master Bathroom Sinks</li> <li>• Solid Surface Lavatory Top</li> <li>• Shower Head with Detachable Hand-held Shower Wand</li> </ul>	<ul style="list-style-type: none"> <li>• Teak Folding Shower Seat</li> <li>• Shower Skylight</li> <li>• Shower LED Light with Sliding Cover</li> <li>• Towel and Toilet Paper Holders</li> </ul>	<ul style="list-style-type: none"> <li>• Medicine Cabinet with Tri-view Vanity Mirror</li> <li>• Roof Vent Fan</li> </ul>
--------------------------------------------------------------------------------------------------------------------------------------------------------------------------------------------	--------------------------------------------------------------------------------------------------------------------------------------------------------------------------------------------------	---------------------------------------------------------------------------------------------------------------------------

BATHROOM OPTIONS		35 CP	40 IP	45 OPP	45 FP
Number of Bathrooms	(1) Bathroom	S	-	-	-
	(1) Bathroom and (1) Half-bath <sup>1</sup>	-	S	S	S
Shower	Solid Surface Shower Walls with Inlaid Tile and Residential Glass Door (32" x 40")	S	S	-	-
	Solid Surface Shower Walls with Inlaid Tile and Residential Glass Door (32" x 48")	-	-	S	-
	Solid Surface Shower Walls with Inlaid Tile and Residential Glass Door (34" x 52.5")	-	-	-	S
Toilet	(1) Macerator Toilet	S	-	-	-
	(1) Electric Gravity Flush Toilet and (1) Macerator Toilet	-	S	S	S
Pure Linen Master Bath Cabinets <sup>2</sup>	O	O	O	O	

<sup>1</sup> All half-baths contain a toilet and a solid surface countertop with a single porcelain sink.

<sup>2</sup> Replaces the chosen cabinetry stain used throughout the coach with Pure Linen for the master bathroom.

### BEDROOM

<ul style="list-style-type: none"> <li>• Under Bed Storage</li> <li>• Bedside Windows</li> <li>• Bed Comforter with Throw Pillows</li> </ul>	<ul style="list-style-type: none"> <li>• Strategically Placed, Handcrafted Privacy Door</li> <li>• LED Reading Lights</li> <li>• Nightstand with Solid Surface Tops</li> <li>• Centralized Entertainment Center <sup>1</sup></li> </ul>	<ul style="list-style-type: none"> <li>• Ceiling Fan</li> <li>• Decorative Handcrafted Wood Ceiling Ring</li> <li>• Safe</li> </ul>
----------------------------------------------------------------------------------------------------------------------------------------------	-----------------------------------------------------------------------------------------------------------------------------------------------------------------------------------------------------------------------------------------	-------------------------------------------------------------------------------------------------------------------------------------

BEDROOM OPTIONS		35 CP	40 IP	45 OPP	45 FP
Mattress	Memory Foam King Mattress (72" x 80")	-	S	S	S
	Power Smart King Bed (72" x 80")	S	O	O	O
Bed Slide	Overhead Cabinet with Headboard	S	S	S	S
	Window at Head of Bed <sup>2</sup>	O	O	O	O
Bedroom TV	Mounted Flat-panel TV	S	S	S	S
	Bedroom Lift TV with Fireplace	-	O	O	O
Bedroom Storage	Floor-to-ceiling Closet Space	S	S	-	S
	Walk-in Closet	-	-	S	-
	Solid Surface Countertops within Storage Spaces	-	-	S	S
Laundry Hamper	S	S	-	S	

<sup>1</sup> Houses Blu-ray™ player, satellite receiver, and cable TV hook-up.

<sup>2</sup> Window option removes overhead cabinets.

Because of progressive improvements and specifications, standard and optional equipment are subject to change without notice or obligation. For a complete and up-to-date list of available options and specifications, visit [tiffinmotorhomes.com](http://tiffinmotorhomes.com).



Reflecting over four decades of innovation, Tiffin's proprietary PowerGlide Chassis demonstrates our ongoing commitment to delivering a motorhome experience that's precisely engineered for durability, reliability, performance, and control wherever your journey takes you.

#### MULTIPLEX WIRING WITH DIAGNOSTICS

The PowerGlide's multiplexed electrical system, with auto-reset fuses and relays, uses less wiring and increases reliability, efficiency, and flexibility.

#### DYNAMOMETER TESTING

The PowerGlide's dynamometer testing simulates full power road testing, enabling us to better assess engine performance, cooling system function, and instrumentation.

#### POWERGLIDE CHASSIS WARRANTY

The PowerGlide carries a Tiffin-backed limited warranty for three years or 50,000 miles against defects in materials and workmanship.

#### HUCK-BOLTED CONSTRUCTION

The PowerGlide's Huck Bolts are precision engineered two-piece fasteners. Huck Bolts are vibration resistant and provide direct metal to metal contact when installed.

1

YEAR OR 12,000 MILES  
LIMITED WARRANTY

5

YEARS OR 50,000 MILES  
DELAMINATION  
LIMITED WARRANTY

10

YEARS OR 50,000 MILES  
CONSTRUCTION  
LIMITED WARRANTY

1

YEAR COACH  
ROADSIDE SERVICE

∞

ONGOING  
CUSTOMER SUPPORT

FOR PARTS & SERVICE CALL 256.356.0261 OR VISIT [TIFFINMOTORHOMES.COM](http://TIFFINMOTORHOMES.COM)  
105 2ND ST NW RED BAY, AL 35582  



**TIFFIN**  
MOTORHOMES

©2022 Tiffin Motorhomes, Inc. Allegro®, Allegro Breeze®, Allegro RED®, Phaeton®, Allegro Bus®, Zephyr®, Wayfarer®, Roughing It Smoothly®, Open Road®, PowerGlide®, and Cahaba® are registered trademarks of Tiffin Motorhomes, Inc. All rights reserved. For all information concerning the limited warranty provided by Tiffin, please refer to the full written limited warranty set forth on the Tiffin website or held by our authorized dealerships. Please note, some interior furnishings not included. Revised: 02/24/23