



VENTANA

2023 DIESEL MOTOR COACH





FLEXING ITS FLEXIBILITY.

With 11 different floor plans, four different lengths, and two optional chassis—plus a load of features, options, and upgrades—the Ventana is one of our most adaptable coaches. And it's easy to make yours.





Freightliner® XCR Tag Axle Chassis Spartan® K2 Tag Axle Chassis (Optional)

Cummins L Diesel Engine // 400 HP // 1250 lb./ft. torque
Remmy Full-Paint Masterpiece Finish™ Exterior



40'–43' // 7 floor plans



Freightliner® XCR Chassis Spartan® K2 Chassis (Optional)

Cummins B Diesel Engine
360 HP // 800 lb./ft. torque
Remmy Full-Paint
Masterpiece Finish™ Exterior



34'–37' // 4 floor plans



COCKPIT

Six-Way Power Driver and Passenger Seats

Power Lumbar and Footrest

Industry-First Comfort Drive™ Adaptive Steering with Passive Steer Technology

Xite Dash Radio (Optional)

6.5" Single Monitor
Nav-N-Go Navigation System

Optiview Dash Display*

Valid Digital Dash**

Mobileye Lane Tracking and Lane Departure System

Haptic Feedback

Wireless Charging Mats

*Freightliner Chassis Only
**Optional Spartan Chassis Only





CABIN

- Two 15M Penguin™ Heat Pump Central Air Conditioners¹**
- Samsung® 50" 4K LED TV on Televator and Bose® Soundbar**
- Samsung® 43" 4K LED TV in Front Overhead** (Optional)
- Mid-Ship Dedicated Workspace***
- Villa Comfort Fit Furniture**
Numerous Optional Configurations Available
- Beverage Center with Wine Cooler and Stemware Rack**** (Optional)
- Three Décor Options:
Remmy**, Gotham, Colfax**

¹Three 15M Penguin Heat Pump air conditioners on 43' floor plans
^{*}Floor plans 4068 and 4334
^{**}New for 2023



Floor Plan 4328 with Remmy décor and Toffee cabinetry





CABIN

New Vinyl Ceiling Color: Parma

WiFi Ranger Everest LTE System with Aspen Router**
(Optional)

**Remote App to Control Coach Features
via Bluetooth®****

**10" KIB Control System to Control HVAC
and Lighting****

Electric Radiant Heat Beneath Main Floor Tile (Optional)

**New for 2023





GALLEY

30" Convection Stainless Microwave

Recessed Three Burner Cooktop

All-Electric Flush Mount Induction Cooktop (Optional)

Norcold® 10 cu. ft. Refrigerator

Eight Optional Refrigerator Configurations

Glazed Maple Hardwood Cabinets

Available in Four Matte or High Gloss* Finish Color Options

Soft-Close Cabinet Drawers

Polished Solid-Surface Countertops

Recessed LED Lights in Ceiling and Overhead Cabinets

Pullout Pantry Shelves with Push-to-Release Drawer Slides

*New for 2023



Floor Plan 4328 with Remy décor and Toffee cabinetry





DINETTE

Williamsburg Convertible Booth Dinette

Buffet Dinette*

Combination Desk/Dinette

*Additional dinette configurations available





MASTER BEDROOM

- King Bed* with Pillow Top Mattress**
Sleep Number® Mattress with Adjustable Base (Optional)
- Samsung® 4K LED TV**
- Wardrobe with Optional Safe**

*Standard Bed Size Varies by Floor Plan





BATHROOM

35" Radius Shower*

Aqua Miser® Shower System

Fold-Down Shower Seat (Optional)

Polished Solid-Surface Countertops

Chinook Dual Loop Heat with Continuous Hot Water
(Optional)

*Floor plan 4068
Additional shower sizes available on other floor plans





EXTERIOR

Industry-Exclusive Full-Paint Masterpiece Finish™ with Cut and Buff

Silverstar Ultra Headlight Bulbs
Automatic High Beam

Girard® G2000 Power Side Awning
Wind Sensor
Remote Control
LED Lights

Exterior Entertainment Center (Optional)
Samsung® 4K LED TV
Bose® Soundbar





EXTERIOR

Industry-Exclusive STAR Foundation
Four Graphic Design and Color Options*
8.0 kW Cummins Onan® Diesel Generator
10-Watt Solar Panel to Charge Chassis Battery

*New for 2023





INTERIOR/EXTERIOR
DESIGN OPTIONS

Colfax



Awning Color: Charcoal Tweed

COLFAX INTERIOR a. Furniture/Fabric b. Flooring c. Counter Top



CABINET FINISHES



*Exterior colors and interior décor options can be matched to customer preference.

*Available in High Gloss or Matte Finish





Gotham



Awning Color: Charcoal Tweed

GOTHAM INTERIOR a. Furniture/Fabric b. Flooring c. Counter Top



CABINET FINISHES



*Exterior colors and interior décor options can be matched to customer preference.

*Available in High Gloss or Matte Finish

Remmy

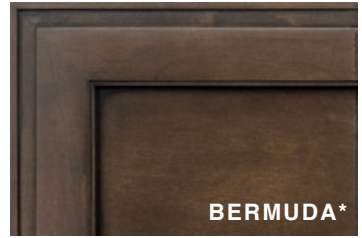


Awning Color: Linen Tweed

REMMY INTERIOR a. Furniture/Fabric b. Flooring c. Counter Top



CABINET FINISHES



*Exterior colors and interior décor options can be matched to customer preference.

*Available in High Gloss or Matte Finish

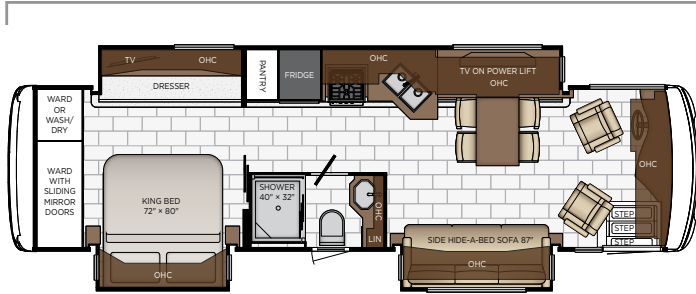




FLOOR PLANS & SPECIFICATIONS

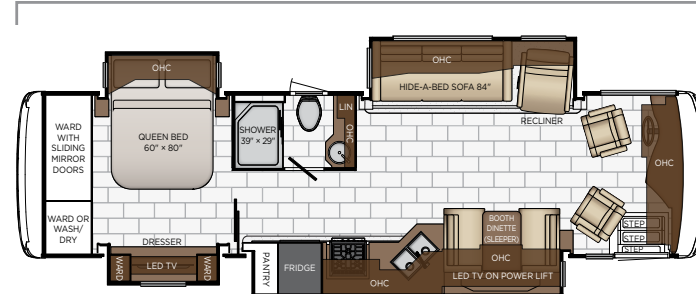


Length: 34' 10"



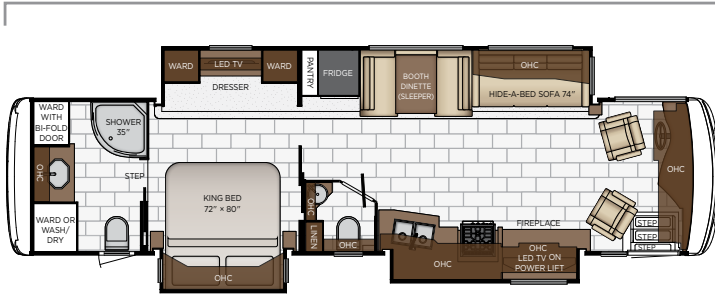
3407	Length	34' 10"	Grey Tank	75 gal.
	Width	101.5"	Sewage Tank	55 gal.
	App. Overall Height	12' 10"	Water Tank	105 gal.
	Interior Width	95.5"	Propane Tank	32 gal.
	Interior Height	83"	Furnace	35,000 btu

Length: 34' 10"



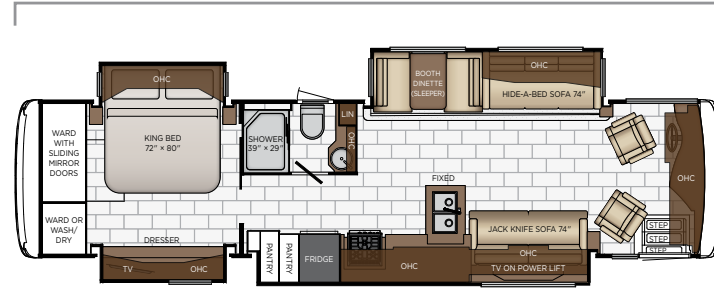
3412	Length	34' 10"	Grey Tank	75 gal.
	Width	101.5"	Sewage Tank	55 gal.
	App. Overall Height	12' 10"	Water Tank	105 gal.
	Interior Width	95.5"	Propane Tank	32 gal.
	Interior Height	83"	Furnace	35,000 btu

Length: 37' 10"



3709	Length	37' 10"	Grey Tank	75 gal.
	Width	101.5"	Sewage Tank	55 gal.
	App. Overall Height	12' 10"	Water Tank	105 gal.
	Interior Width	95.5"	Propane Tank	32 gal.
	Interior Height	83"	Furnace	54,000 btu

Length: 37' 10"



3717	Length	37' 10"	Grey Tank	75 gal.
	Width	101.5"	Sewage Tank	55 gal.
	App. Overall Height	12' 10"	Water Tank	105 gal.
	Interior Width	95.5"	Propane Tank	32 gal.
	Interior Height	83"	Furnace	54,000 btu

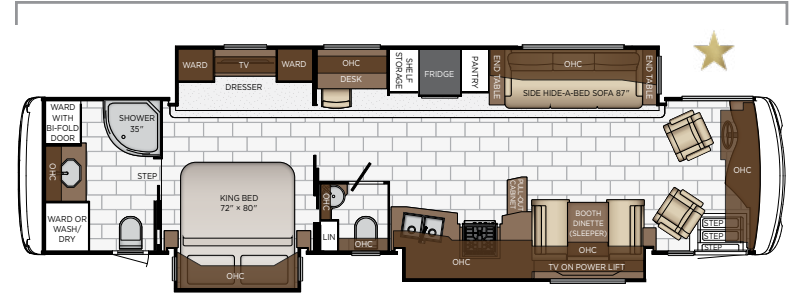


Length: 40' 10"



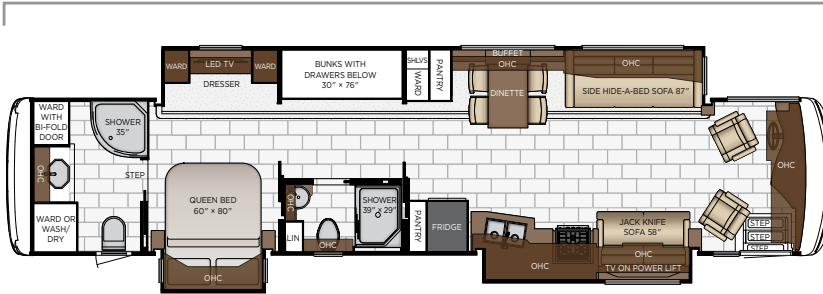
4037	Length	40' 10"	Grey Tank	75 gal.
	Width	101.5"	Sewage Tank	55 gal.
	App. Overall Height	12' 11"	Water Tank	105 gal.
	Interior Width	95.5"	Propane Tank	32 gal.
	Interior Height	83"	Furnace	54,000 btu

Length: 40' 10"



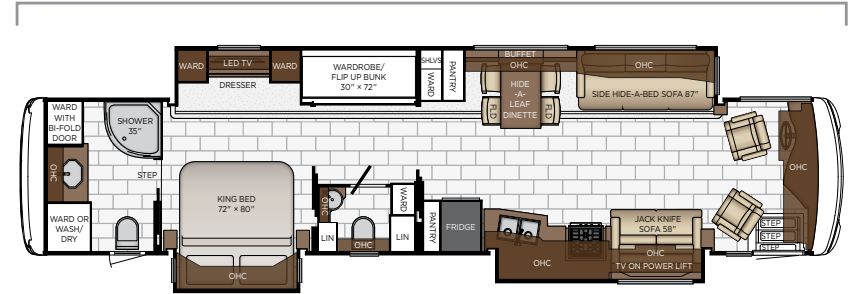
4068	Length	40' 10"	Grey Tank	75 gal.
	Width	101.5"	Sewage Tank	55 gal.
	App. Overall Height	12' 11"	Water Tank	105 gal.
	Interior Width	95.5"	Propane Tank	32 gal.
	Interior Height	83"	Furnace	54,000 btu

Length: 43' 10"



4310	Length	43' 10"	Grey Tank	75 gal.
	Width	101.5"	Sewage Tank	55 gal.
	App. Overall Height	13' 01"	Water Tank	105 gal.
	Interior Width	95.5"	Propane Tank	32 gal.
	Interior Height	83"	Furnace	85,000 btu

Length: 43' 10"

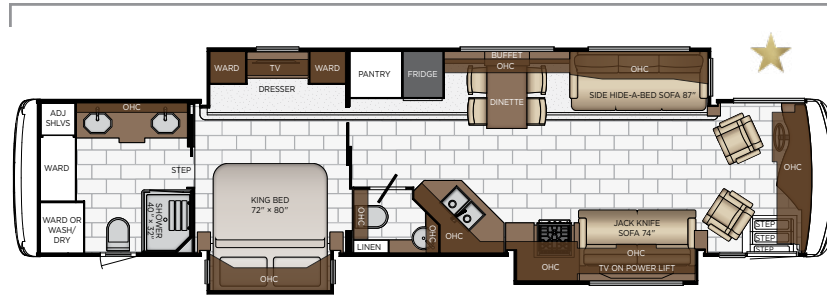


4326	Length	43' 10"	Grey Tank	75 gal.
	Width	101.5"	Sewage Tank	55 gal.
	App. Overall Height	13' 01"	Water Tank	105 gal.
	Interior Width	95.5"	Propane Tank	32 gal.
	Interior Height	83"	Furnace	50,000 btu

★ - new floor plan

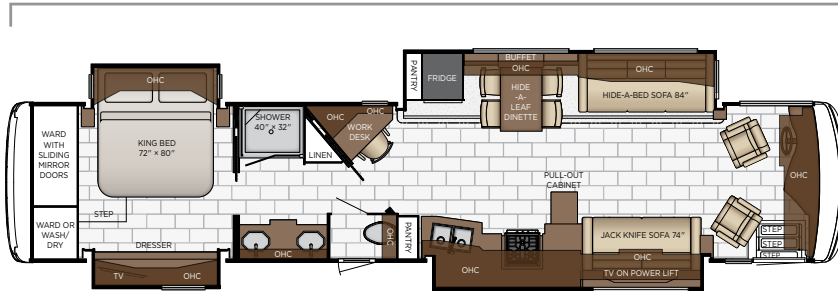


Length: 43' 10"



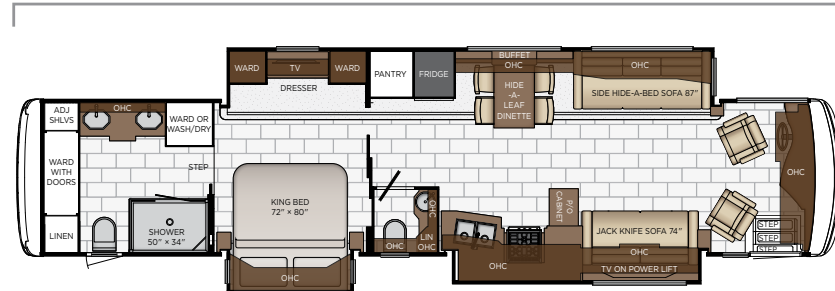
4328	Length	43' 10"	Grey Tank	75 gal.
	Width	101.5"	Sewage Tank	55 gal.
	App. Overall Height	13' 01"	Water Tank	105 gal.
	Interior Width	95.5"	Propane Tank	32 gal.
	Interior Height	83"	Furnace	50,000 btu

Length: 43' 10"



4334	Length	43' 10"	Grey Tank	75 gal.
	Width	101.5"	Sewage Tank	55 gal.
	App. Overall Height	13' 01"	Water Tank	105 gal.
	Interior Width	95.5"	Propane Tank	32 gal.
	Interior Height	83"	Furnace	50,000 btu

Length: 43' 10"



4369	Length	43' 10"	Grey Tank	75 gal.
	Width	101.5"	Sewage Tank	55 gal.
	App. Overall Height	13' 01"	Water Tank	105 gal.
	Interior Width	95.5"	Propane Tank	32 gal.
	Interior Height	83"	Furnace	50,000 btu

★ - new floor plan



QUALITY YOU CAN FEEL

Like a fine home, the 2023 Ventana is framed 16 inches on center, and is covered by a fiberglass roof with an integrated gutter rail.

FREIGHTLINER											
FLOOR PLAN	ENGINE HP	AXLE RATIO	FUEL CAP.	WHEEL BASE	FRONT GAWR	REAR GAWR	TAG GAWR	GVWR	GCWR	APP. UVW	APP. NCC
3407	360	4.78	100 gal.	206	14000 lb.	23000 lb.	n/a	37000 lb.	47000 lb.	29500 lb.	7500 lb.
3412	360	4.78	100 gal.	206	14000 lb.	23000 lb.	n/a	37000 lb.	47000 lb.	29800 lb.	7200 lb.
3709	360	4.78	100 gal.	242	14200 lb.	24000 lb.	n/a	38200 lb.	48200 lb.	31100 lb.	7100 lb.
3717	360	4.78	100 gal.	242	14200 lb.	24000 lb.	n/a	38200 lb.	48200 lb.	31000 lb.	7200 lb.
4037	400	4.78	100 gal.	245+TAG	14200 lb.	20000 lb.	10000 lb.	44200 lb.	59200 lb.	34800 lb.	9400 lb.
4068	400	4.78	100 gal.	245+TAG	14200 lb.	20000 lb.	10000 lb.	44200 lb.	59200 lb.	34800 lb.	9400 lb.
4310	400	4.78	100 gal.	281+TAG	15600 lb.	20000 lb.	10000 lb.	45600 lb.	60600 lb.	37100 lb.	8500 lb.
4326	400	4.78	100 gal.	281+TAG	15600 lb.	20000 lb.	10000 lb.	45600 lb.	60600 lb.	37100 lb.	8500 lb.
4328	400	4.78	100 gal.	281+TAG	15600 lb.	20000 lb.	10000 lb.	45600 lb.	60600 lb.	36800 lb.	8800 lb.
4334	400	4.78	100 gal.	281+TAG	15600 lb.	20000 lb.	10000 lb.	45600 lb.	60600 lb.	36400 lb.	9200 lb.
4369	400	4.78	100 gal.	281+TAG	15600 lb.	20000 lb.	10000 lb.	45600 lb.	60600 lb.	36800 lb.	8800 lb.
SPARTAN											
FLOOR PLAN	ENGINE HP	AXLE RATIO	FUEL CAP.	WHEEL BASE	FRONT GAWR	REAR GAWR	TAG GAWR	GVWR	GCWR	APP. UVW	APP. NCC
3407	360	4.78	100 gal.	206	14000 lb.	23000 lb.	n/a	37000 lb.	47000 lb.	29700 lb.	7300 lb.
3412	360	4.78	100 gal.	206	14000 lb.	23000 lb.	n/a	37000 lb.	47000 lb.	30000 lb.	7000 lb.
3709	360	4.78	100 gal.	242	14200 lb.	24000 lb.	n/a	38200 lb.	48200 lb.	31200 lb.	7000 lb.
3717	360	4.78	100 gal.	242	14200 lb.	24000 lb.	n/a	38200 lb.	48200 lb.	31200 lb.	7000 lb.
4037	400	4.88	100 gal.	245+TAG	14200 lb.	20000 lb.	10000 lb.	44200 lb.	59200 lb.	34700 lb.	9500 lb.
4068	400	4.88	100 gal.	245+TAG	14200 lb.	20000 lb.	10000 lb.	44200 lb.	59200 lb.	34700 lb.	9500 lb.
4310	400	4.88	100 gal.	281+TAG	16000 lb.	20000 lb.	10000 lb.	46000 lb.	61000 lb.	35700 lb.	10300 lb.
4326	400	4.88	100 gal.	281+TAG	16000 lb.	20000 lb.	10000 lb.	46000 lb.	61000 lb.	36800 lb.	9200 lb.
4328	400	4.88	100 gal.	281+TAG	16000 lb.	20000 lb.	10000 lb.	46000 lb.	61000 lb.	36800 lb.	9200 lb.
4334	400	4.88	100 gal.	281+TAG	16000 lb.	20000 lb.	10000 lb.	46000 lb.	61000 lb.	36400 lb.	9600 lb.
4369	400	4.88	100 gal.	281+TAG	16000 lb.	20000 lb.	10000 lb.	46000 lb.	61000 lb.	36800 lb.	9200 lb.

The content in our literature depicts and describes products that are subject to change. For the most recent images and information, please visit NewmarCorp.com.

Lengths, heights, widths, and dry weights are approximate. Weight will vary based on optional equipment added to the above base weight.

GAWR: Gross Axle Weight Rating is the maximum permissible weight for an axle.

GVWR: Gross Vehicle Weight Rating is the maximum permissible weight for a fully loaded motor coach.

GCWR: Gross Combination Weight Rating is the value specified by the manufacturer of the vehicle as the maximum allowable loaded weight of this motor coach and any towed trailer or towed vehicle.

UVW: Unloaded Vehicle Weight is the weight of this motor coach as built at the factory with full fuel, engine oil, and coolants. Does not include cargo, fresh water, propane gas, or dealer-installed accessories.

NCC: Net Carrying Capacity is the maximum weight of all occupants, including the driver, personal belongings, food, fresh water, waste water, propane gas, tools, tongue weight of towed vehicle, dealer-installed accessories, etc., that can be carried by the motor coach.

Specifications supplied by the chassis manufacturer.

Ventana R-Values:

Roof R-Value = 19

Sidewall R-Value = 11

Floor R-Value = 16

Basement R-Value = 4





FEATURES & OPTIONS

EXTERIOR FEATURES

Full-Paint Masterpiece Finish™ with Diamond Shield Protection on Front Cap

Convex Exterior Mirrors with Remote Control, Defrost and Turn Signal Indicators

Chrome Exterior Mirrors

Entrance Door with Automatic Step

Rear Hitch for Towing Car

Assist Handle at Entrance Door

Mud Flaps

Rear Protective Tow Guard with Stainless Steel Newmar Letters

Undercoating

Smart Level Hydraulic Leveling Jacks with Bluetooth Compatible Touch Pad

Stainless Steel Exterior Trim Pieces on Front Cap and Grill Area

Painted Power Baggage Door Locks, Keyless Entrance Door with Touch Pad and Doorbell

OPTIONS

Chrome Power Baggage Door Locks

Flag Pole Bracket

Rear Ladder

Storage Tray 26 X 91 Non-Power, Location Bay 2

Storage Tray 32 X 91 Non-Power, Location-Bay 2

Storage Tray 43 X 56 Non-Power, Location-Bay 3

Storage Tray 43 X 56 Non-Power, Location-Bay 4

CONSTRUCTION FEATURES

Gelcoated Fiberglass Exterior Sidewalls, Front and Rear Caps

Aluminum-Frame Sidewalls and Roof Construction, 16" on Center

5/8" Foam Insulation Laminated in Sidewalls and Ceiling

Automatic Mechanical Lock Arms on Slideout Rooms-Scissor Style

Polar Pak R19 Batten Insulation in Roof

Fiberglass Roof and Integrated Gutter Rail

Egress Door with Ladder System

WINDOWS, AWNINGS, & VENTS

Frameless Double-Pane Tinted Safety-Glass Windows

Fan-Tastic® Vent with Rain Sensor in Kitchen and Bathroom

Skylight Above Shower

Girard® G2000 Power Side Awning with Wind Sensor, Remote Control and LED lights

Slideout Awning Covers

One Piece Tinted Windshield

OPTIONS

Carefree Window Awning Pkg of (3), 1-Bedroom, 1-Off Door Side Livingroom, 1-Door Side Livingroom

Carefree Window Awning Pkg of (4), 1-Bedroom, 1-Off Door Side Livingroom, 2-Door Side Livingroom

Carefree Window Awning Pkg of (5), 1-Bedroom, 2-Livingroom, 2-Hallway

Kitchen Window*

Two Nova Side Awnings

Bunk Windows*

CHASSIS FEATURES

Aluminum Wheels

Cruise Control

Comfort Drive™ Steering With Adjustable Control

Manual Tilt and Telescope Steering Columnwith VIP Smart Wheel

Recessed Fuel Fills with Crossover to Fill from Either Side

Back-Up Alarm

Anti-Lock Braking System

Chassis Battery Disconnect

V-Ride Drive Axle Suspension on Freightliner® Chassis

Glass Dash Instrumental Panel

Dash Panel Optiview

Headlights Automatic High Beam

Mobileye® Tracking and Lane Departure Warning System

Steering Wheel Nine Function Switch Pod in Center on Spartan® Chassis

Valid Digital Glare Free Dash on Spartan® Chassis

Freightliner® 360Hp on 34'–37' Floor Plans

Freightliner® Tag Axle 400Hp on 40'–43' Floor Plans

OPTIONS

Spartan® 360Hp on 34'–37' Floor Plans

Spartan® Tag Axle 400Hp on 40'–43' Floor Plans

AIR CONDITIONING & HEATING

Two-15M Penguin™ Heat Pump Air Conditioners

Three-15M Penguin Heat Pump Air Conditioner and Energy Management System on 43' Floor Plans

Propane Gas Furnace with Ducted Heat on 34'–40' Floor Plans

Dash Heater and Air Conditioner

Chinook Dual Loop Heat with Continuous Hot Water on 43' Floor Plans

Driver and Passenger Dash Overhead Ventilation System

Wall Mounted Sensors for Heating and Air Conditioning



**OPTIONS**

- Chinook Dual Loop Heat with Continuous Hot Water*
- Electric Radiant Heat Installed Below Main Floor Tile

ELECTRICAL FEATURES

- 8.0 kW Cummins Onan® Diesel Quiet Series Generator
- 50 Amp Electrical Service with Flexible Cord with Automatic Transfer Switch
- Four 6-Volt House Batteries on Pullout Tray
- Battery Disconnect Switch for House Battery
- Automatic Generator Start on Low Battery or Temperature Setting
- 10 Watt Solar Panel to Charge Chassis Battery
- 2000 Watt Modified Sine Inverter
- 12 Volt Auxiliary Receptacle on Dashboard
- Emergency Engine Start Switch
- Engine Block Heater
- Exterior Security Light on Doorside
- Midship Side Turn Signals
- LED Lights Recessed in Ceiling and Underneath Overhead Cabinets
- Lights in Exterior Storage Compartments
- Manually Operated Hold-To-Run Slideout Switch
- Cable TV Connection
- Interior Courtesy Lights
- USB Charger at Dinette and Bedroom Night Stand
- USB Outlet at Dash for Drive Use
- Wireless Charging Mat Built into Dash for Driver Use
- Wireless Charging Mat Built into Passenger Console
- Spare Fuses in Chassis and House Fuse Panels
- Energy Management System
- Multiplex Monitor System 10.1" in Center of Coach with Interior Lighting and HVAC Controls
- Dimmable/Adjustable Reading Lights at Head of Bed
- 110 Volt Recept in Bed Overhead with Two Pass-Through Ports
- 110V/USB Outlet at Head of Each Bunk Area*
- 12 Volt Recept Auxiliary on Dashboard
- Power Rewind Reel with 33' Cord*
- Power Rewind Reel with 50' Cord*
- System Control App to Control Numerous Features from Personal Device

OPTIONS

- Solar Prep with Six Gauge Wire Ran from the Roof to the House Battery Compartment
- Four Flexible 110 Watt Solar Panels on Roof
- Transfer Switch with Surge Protector

PLUMBING & BATH FEATURES

- Demand Water System
- Sewage Holding-Tank Rinse
- Water Heater Bypass System
- Dometic® 321 China Bowl Stool or Macerator Stool*
- Sentrel Acrylic Shower Walls with Glass Door
- Water Filter for Entire Unit
- Exterior Shower
- Auto Fill Water Works Compartment
- Power Water Hose Reel
- Aqua Miser Shower System

OPTIONS

- Fold Down Shower Seat
- Hot Water Line to Generator Area*

INTERIOR FEATURES

- Designer Feature Ceiling
- Tile Floor in Kitchen, Bathroom and Living Areas
- Carpeting on Slideout Floors
- MCD Window Shades
- MCD Power Shades at Windshield and Manual Shades on Driver/Passenger Side Windows
- Dash Panel Color Coordinated ABS
- Decorative Wall Art
- Inlaid Three Panel Design Interior Passage Doors
- Interior Assist Handle at Main Entry Door
- Power Stepwell Cover
- Fitted with Round Corner Non-Quilted Bedspread with Accent Pillows
- Removable Transport Pads for Under Slideout Rollers
- Wastebasket in Kitchen Base Under Sink

OPTIONS

- Safe Located in Bedroom Wardrobe

CABINETS & FURNITURE

Bermuda Glazed Maple Hardwood Cabinets with Mitered Flat Designer Doors- Matte Finish

Concealed Hinges on Cabinet Doors

Soft-close Cabinet Drawers

Pullout Pantry Shelves*

Drawer Slides Push-to-Release in Pantry

Drawers with Full Extension Ball Bearing Guides

Cooktop Cover Flush, Matching Material

Polished Solid Surface Countertop in Kitchen with Under Mounted Stainless Steel Sink and Sink Covers

Polished Solid Surface Countertop in Bathroom and Bedroom

Desk with One Chair*

Dinette Booth Williamsburg Convertible*

Lifts on Bed Top

Passenger Seat Work Station

Ultrafabric Sofa and Driver/Passenger Seats

Driver Seat with Vibrator for Mobileye® System

Driver/Passenger Seats with Six-Way Power, Power Lumbar and Footrest

Plush Pillow Top Mattress

Extended Rotation Concealed Hinge for Washer/Dryer Cabinet Door

Mesh Cell Phone Holder at Each Bunk Bed*

Molded Silverware Divider Tray

Villa Comfort Fit Furniture

OPTIONS

Toffee Glazed Maple Hardwood Cabinets with Mitered Flat Designer Doors-Matte or High Gloss Finish

Glacier Glazed Maple Hardwood Cabinets with Mitered Flat Designer Doors-Matte or High Gloss Finish

Newport Glazed Maple Hardwood Cabinets with Mitered Flat Designer Doors-Matte or High Gloss Finish

Bermuda Glazed Maple Hardwood Cabinets with Mitered Flat Designer Doors-High Gloss Finish

Sleep Number® Air R5 Mattress Radius Corner

Dinette Booth Villa Comfort Fit Convertible

Buffet Dinette with Free Standing Table Two Fixed/Two Folding Chairs

Combination Desk with Buffet Table, Two Fixed/Two Folding Chairs

Combination Desk/Dinette with Free Standing Hidden Leaf Table, Two Fixed/Two Folding Chairs

Combination Desk with Buffet Dinette, Two Fixed/Two Folding Chairs Two Fixed/Two Folding Chairs

Dinette Convertible with Two Fixed/Two Folding Chairs that Face to Window

Combination Dinette Desk with Free Standing Hidden Leaf Table,

Two Recliners with Lampstand and Reading Lights

Two Recliners, with Reading Lights

Two Recliners, Lampstand, Reading Lights-Off Door Side, Trifold Sofa and One Large Window

Euro Booth Dinette with Two Table Leaves, Removable Table Leg, and Two Folding Chairs

Two Ottomans*

Powered Theater Seating 74"

Powered Theater Seating 87"

Powered Theater Seating 87" with Reading Lights

Bunk Beds to Convert to Wardrobe

APPLIANCES & ACCESSORIES

Convection Stainless Steel Microwave with Three Burner Recessed Gas Cooktop

Air Horns

Norcold® 10 Cf. Refrigerator with Brushed Aluminum Refrigerator Front

Prep for Two-Piece Washer/Dryer

Fireplace in Living Area*

OPTIONS

Norcold® 12 Cf. Four-Door Refrigerator with Icemaker

Norcold® 12 Cf. Four-Door Refrigerator with Icemaker with Heated Water Line

Icemaker Added to Standard Norcold® Refrigerator

Icemaker Added to Standard Norcold® Refrigerator with Heated Water Line

Whirlpool® 11 Cf. Refrigerator with Two Extra Batteries, 22 gal. Propane Tank and Icemaker

Whirlpool® 11 Cf. Refrigerator with Two Extra Batteries, 22 gal. Propane Tank

Whirlpool® 19.7 Refrigerator with Two Extra 6 Volt Batteries and 22 gal. Propane Tank

Whirlpool® 19.7 Refrigerator with Two Extra 6 Volt Batteries and 22 gal. Propane Tank and Heated Water Line

Splendide® Two-Piece Stacked Washer/Dryer

All Electric, Flush Mount Induction Cooktop, Whirlpool 19.7 Refrigerator, 4 Extra Batteries, 2800 Pure Sine Inverter, Hydronic Heat

All Electric, Flush Mount Induction Cooktop, Whirlpool 19.7 Refrigerator, 4 Extra Batteries, 2800 Pure Sine Inverter

Central Vacuum with Tool Kit

110 Volt Heat Pads for Holding Tanks

Dishwasher in a Drawer with Stainless Steel Front Below Cooktop

Electrical Prep for Freezer without Tray

Truma Comfort Plus Continuous Hot Water Heater*

Beverage Center with Wine Cooler and Stemware Rack





AUDIO, VIDEO & ACCESSORIES

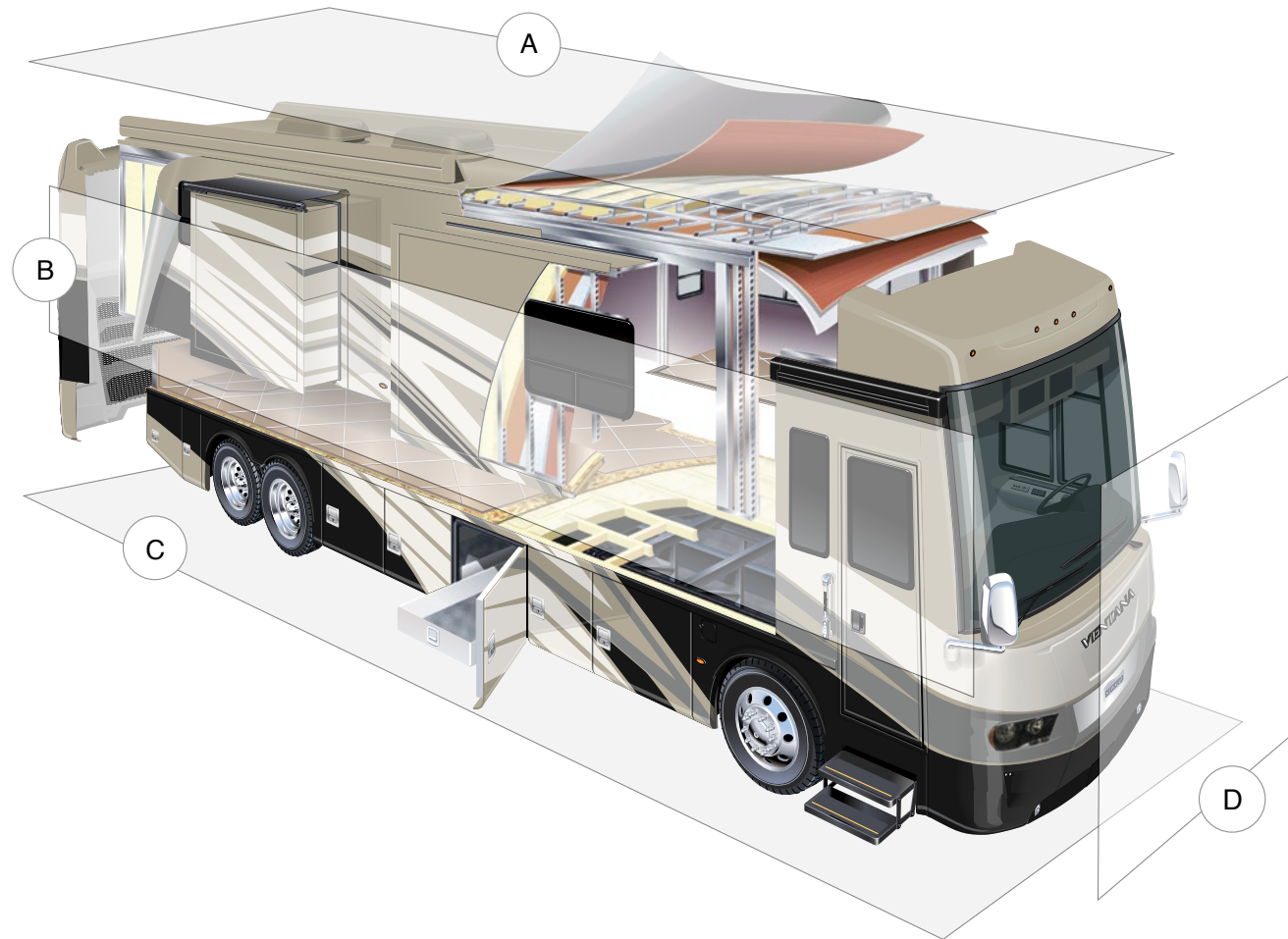
- Samsung® LED 4K TV in Living and Bedroom Areas* (TV Sizes Vary Per Floor Plan)
- Samsung® 50" LED 4K TV on Televator in Living Area*
- Dash Radio with Harman/JBL 180 Watt Sound System and Subwoofer
- Bose® Sound Bar Sound System
- Bluetooth Microphone for Dash Radio
- Rearview Color Monitor System with Audio
- Side-View Cameras Displayed on Rear View Monitor Screen
- Winegard Digital Crank-up TV Antenna
- Satellite Dish Prep on Roof
- Two Bedroom Radio Speakers
- TV Jack and 110 Volt Recept in Door Side Exterior Storage Compartment
- High Definition Component Wiring
- 10 Bc Fire Extinguisher, Smoke Detectors, Propane and Carbon Monoxide Detector

OPTIONS

- Sirius® Satellite XM Capability with Antenna (Does not include monthly subscription)*
- Samsung® 43" 4K LED TV in Front Overhead
- Exterior Entertainment Center in Sidewall with Samsung® 4K LED TV and Bose® Soundbar
- Exterior Entertainment Center in Storage Compartment with Samsung® 43" LED TV and Bose® Soundbar
- Omniview NS360 Camera System*
- Universal Remote Control
- Universal Toll Module
- Prep for Ground Tripod Satellite Dish on Off Door Side with A/B Switch
- Two-19" Skyworth Monitors at Each Bunk*
- WiFi Ranger Denali/Spruce Lte
- WiFi System Everest with Aspen Interior Router
- Winegard Automatic Dome Satellite Dish-Std/HD, DIRECTV Std. and Bell Canada
- Winegard Automatic Open Face Satellite Dish-HD and Bell HD TV
- Winegard Automatic Open Face SWM Satellite Dish-DIRECTV Std/HD
- Winegard In-Motion Dome Satellite Dish-Std/HD, DIRECTV Std. and Bell Canada
- Winegard Rayzar Automatic Digital TV Antenna
- Xite Dash Radio with 6.5" Single Monitor with Nav-N-Go Navigation System

*CHECK WITH DEALERSHIP ON FLOOR PLAN AVAILABILITY





A. ROOF

- Fiberglass Roof
- Batten Insulation
- A/C Ducting
- 16" on Center Aluminum Rafter Framing
- Kraft Paper Vapor Barrier
- 5/8" Bead Foam
- 3/16" Panel
- Padded Vinyl Overlay

B. SIDEWALL

- Interior Wall Panel
- 5/8" Bead Foam
- Kraft Paper Vapor Barrier
- Batten Insulation
- Composite One-Piece Gelcoat Exterior Sidewall
- Aluminum Framing

C. FLOOR

- Carpet/Tile
- Carpet Padding
- 5/8" Floor Decking
- Batten Insulation
- 16" on Center Wood Framing
- Polyethylene Moisture Barrier

D. EXTERIOR

- 15M Penguin™ Heat Pump Central Air Conditioner
- One-Piece Bonded Windshield
- Coated Aluminum Wheels
- Frameless, Double-Pane, Tinted Safety Glass Windows
- Side-Hinged Baggage Doors with Optional Pull-Out Tray



THE NEWMAR CUSTOMER EXPERIENCE

The Newmar difference goes beyond our industry-leading motor coaches to provide you with an unrivaled ownership experience.



QUALITY FROM THE START

Every Newmar is crafted one at a time by folks who have spent an average of eight years building them. And each coach we assemble must undergo more than 1,000 tests and checks before ever leaving our factory.



CAREFULLY SELECTED DEALERS

We view our dealership network in terms of quality, not quantity. Each of our dealers acts as a partner in our shared mission to exceed your highest of expectations, for an ownership experience that's second to none from day one.



EVERYTHING IN ONE PLACE

As a Newmar owner, you'll find resources specific to your coach through Newgle, an easy-to-use knowledge base that houses everything from user guides to technical support documents.



FRIENDS FOR LIFE

Meet fellow owners through the Newmar Kountry Klub, a top social club for RV travelers that hosts rallies and other special events throughout the U.S. and Canada.



SEAMLESS SERVICE

When you join the Newmar family, we pair you with a dedicated service specialist with expert knowledge of your exact coach. Our service specialists guarantee dealer warranty authorizations within four business hours and ship all in-stock parts the same day, free of charge.



ROCK-SOLID PROTECTION

All models include a one-year/unlimited mileage limited warranty and a five-year, non-transferable structural warranty that covers your coach's superstructure in the event it fails to perform. Ask your Newmar dealer for more details.

OUR PARTNERS

Newmar Quality Begins with the Company We Keep

You deserve class-leading performance from names you can trust. That's why we only work with suppliers dedicated to providing our customers with unrivaled quality, comfort, and support.

BASF

We create chemistry

The Coatings division of BASF is a global expert in the development and production of innovative and sustainable OEM and refinish coatings that deliver solutions beyond your imagination.



INDUSTRIAL FINISHES

Industrial Finishes has supported RV manufacturers for over four decades. The Industrial Finishes paint process delivers uncompromising quality, providing your coach with a true "Masterpiece" finish.



Driven By You

FREIGHTLINER CUSTOM CHASSIS

Freightliner® Custom Chassis Corp. (FCCC) is renowned for delivering the industry's best ownership experience through exceptional 24/7 factory-direct support, exceptional ride and handling, and developing high-performance innovations such as DRIVETECH. It's the only RV driving system that prioritizes safety and automotive luxury by putting every command at your fingertips.



RIVERPARK

At RiverPark, we proudly represent the leading brands in consumer electronics—brands you know and trust to provide exceptional quality and innovative technology. Newmar features Samsung's incredible 4K TVs, Xite Infotainment systems featuring Nav-N-Go Navigation, Bose® soundbars, and JBL and Infinity premium audio. Step into a 2023 Newmar and experience dazzling audio and video performance throughout the coach.



RV CHASSIS

SPARTAN MOTORS

Spartan® Motors is an American company with over 30 years of experience designing and manufacturing the premier motorhome chassis, which provides superior performance, exceptional safety ratings, and industry-leading technology.



WHEN YOU KNOW THE DIFFERENCESM