

TIFFIN

2025

CLASS-C

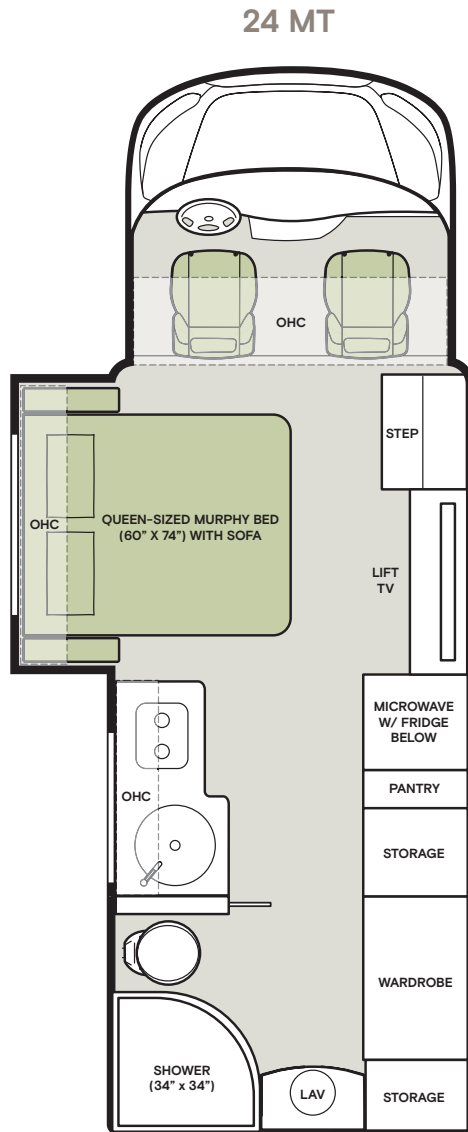
MIDAS



Floor Plan



The design of every Midas floor plan must meet four essential criteria: Maximum space, Optimal organization, Relaxation plus, and Elegant atmosphere. Tiffin's MORE Plans offer your family the most comfortable layout for life on the road.



If optional furniture combinations are selected, window locations may vary from diagram shown. All options may not be available in every model. Because of progressive improvements and specifications, standard and optional equipment are subject to change without notice or obligation.

For a complete and up-to-date list of available options and specifications, visit tiffinmotorhomes.com.

Premium Paint System

The eight-step, full-body paint system features premium grade paints sealed with three layers of clear coat with ultraviolet protection. An additional layer of high-performance film protects the front of the coach and select areas.



G2 ICEBURG



G2 DOVE TAIL



G2 PALLADIAN

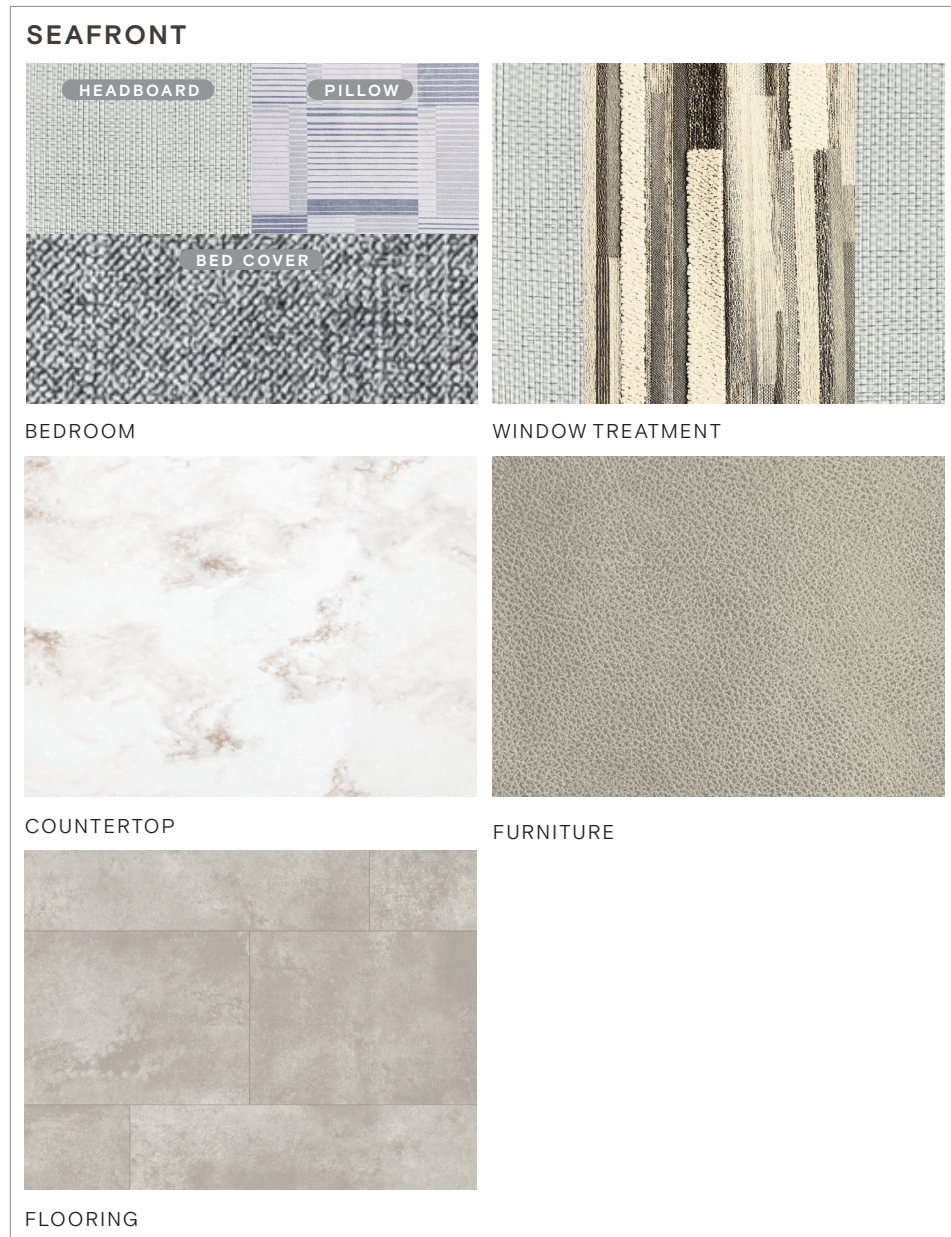
Images shown are representations of paint layouts only and do not reflect all exterior features or options. Colors shown may slightly differ from colors on actual product.

Initial MY2025 Model Change Plans, Subject to Change in Full Production

Interior Décor

Make it all yours. Personalize your décor experience with the Midas' customization options. The Midas' luxury design options allow you to arrive and live in style, wherever your travels and adventures take you.

Colors of interior decor options shown may vary from colors on actual product.



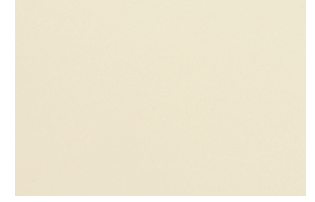
CABINETS



SANDSTONE



SHADOW



WHITE LINEN

1

YEAR OR 12,000 MILES
LIMITED WARRANTY

3

YEARS DELAMINATION
LIMITED WARRANTY

5

YEARS OR 100,000 MILES
CHASSIS POWERTRAIN
LIMITED WARRANTY



3

YEARS OR 36,000 MILES
MERCEDES-BENZ CHASSIS
LIMITED WARRANTY

1

YEAR COACH
ROADSIDE SERVICES

FOR SALES CALL 256-356-8661 AND PARTS & SERVICE CALL 256-356-0261 OR VISIT TIFFINMOTORHOMES.COM

105 2ND ST NW RED BAY, AL 35582  



TIFFIN

MOTORHOMES

All trademarks and logos are owned or used under license by Tiffin Motor Homes, Inc. and include, but are not limited to: TIFFIN®, MANY ADVENTURES, ONE DREAM™, ALLEGRO®, ALLEGRO BREEZE®, ALLEGRO RED®, PHAETON®, ALLEGRO BUS®, ZEPHYR®, WAYFARER®, ROUGHING IT SMOOTHLY®, OPEN ROAD ALLEGRO®, BYWAY™, and associated logos and emblems.

Unauthorized use of any trademark of Tiffin Motor Homes, Inc. is strictly prohibited.

© Copyright 2024 Tiffin Motor Homes, Inc.

For all information concerning the limited warranty provided by Tiffin, please refer to the full written limited warranty set forth on the Tiffin website or held by our authorized dealerships.

Please note, some interior furnishings not included. Revised: 2/29/24